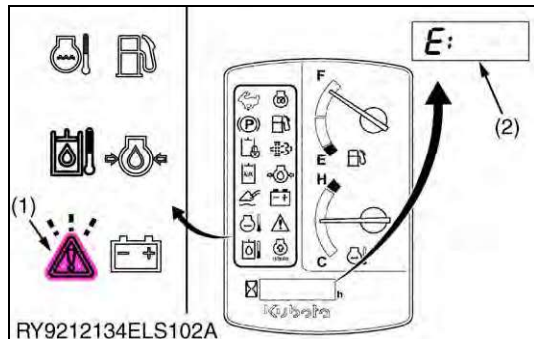


[17] E:024 HYDRAULIC OIL TEMPERATURE SENSOR SYSTEM ERROR

(1) Checking via the Panel Display

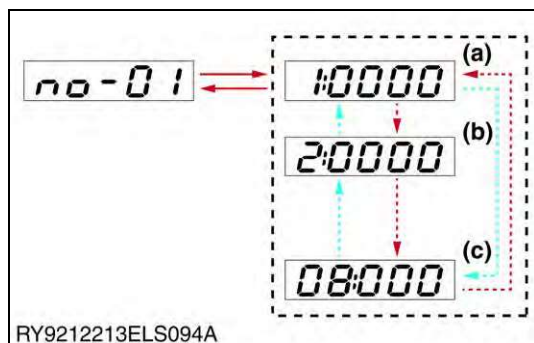


1. Check the error code and warning lamp.

(1) Warning Lamp

(2) Error Code E:024

RY9212213ELS0210US0



2. Check the hydraulic oil temperature in tester mode.

Normal	No-8	-49 to 149 °C
--------	------	---------------

(a) Engine Speed

(b) Battery Voltage

(c) no-08: Hydraulic Oil Temperature

RY9212213ELS0211US0

(2) Inspecting



1. Check the hydraulic oil temperature sensor.

- Check connection of the connector. (loose or poor)
- Disconnect/reconnect the connector, and recheck in tester mode.
- Check damage of cover for the wiring, and not touching the body.

(a) Hydraulic Oil Temperature Sensor

RY9212213ELS0212US0

(3) Inspecting with a Circuit Tester



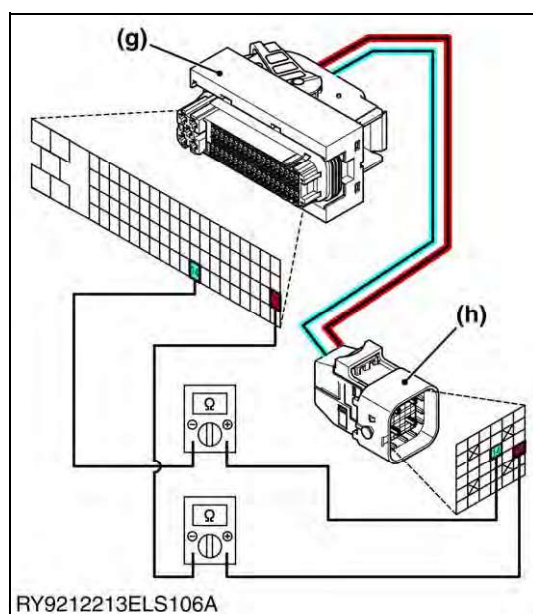
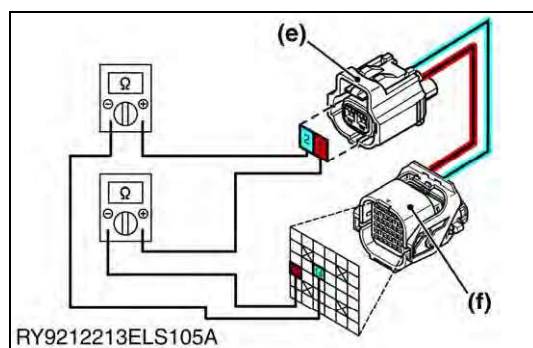
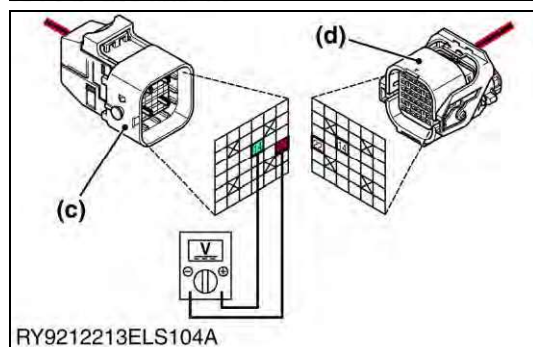
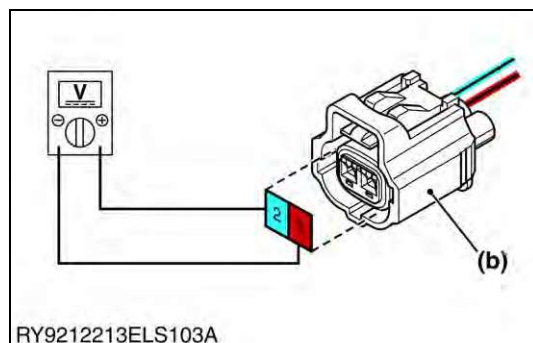
1. Measure the resistance of the hydraulic oil temperature sensor.

- Disconnect the hydraulic oil temperature sensor connector.

Normal	Temperature (°C / °F)	Resistance
	- 20 / -4.0	15.04 kΩ
	20 / 68.0	2.45 kΩ
	30 / 86.0	1.66 kΩ
	40 / 104.0	1.15 kΩ
	50 / 122.0	811 Ω
	60 / 140.0	584 Ω
	80 / 176.0	240 Ω
	110 / 230.0	142 Ω
	130 / 266.0	88 Ω

(a) Hydraulic Oil Temperature Sensor Connector

RY9212213ELS0213US0



2. Check the voltage of the wire harness.

- Disconnect the hydraulic oil temperature sensor connector, and measure the voltage.
- Disconnect the engine harness relay 1 connector, and measure the voltage.

Normal	Key OFF	Key ON
	0 V	5 V

(b) Hydraulic Oil Temperature Sensor Connector

(d) Main Harness Relay 1 Connector

(c) Engine Harness Relay 1 Connector

RY9212213ELS0214US0

3. Check conduction of the wire harness.

- Disconnect the hydraulic oil temperature sensor connector and main harness relay 1 connector.

	Hydraulic oil temperature sensor connector	Main harness relay 1 connector
+12 V (red)	1	22
Ground (blue)	2	14

(e) Hydraulic Oil Temperature Sensor Connector

(f) Main Harness Relay 1 Connector

RY9212213ELS0215US0

- Disconnect the engine harness relay 1 connector and main ECU connector.

	Engine harness relay 1 connector	Main ECU connector
+12 V (red)	22	25
Ground (blue)	14	14

Normal	Conduction
--------	------------

(g) Engine Harness Relay 1 Connector

(h) Main ECU Connector

RY9212213ELS0216US0