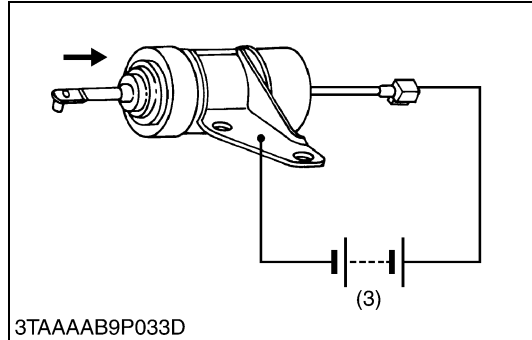
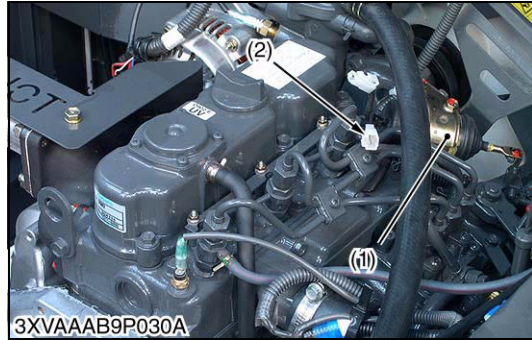
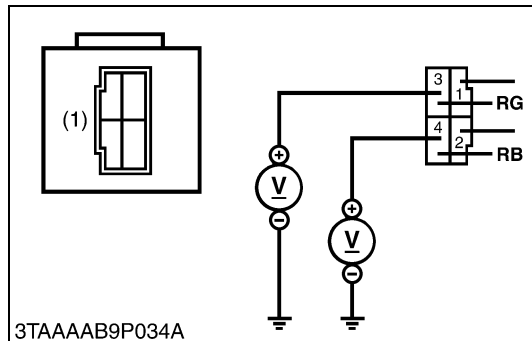
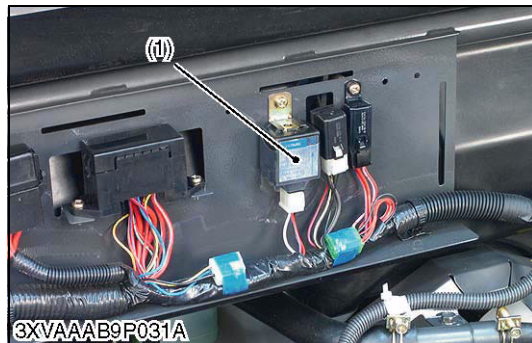


(6) Engine Stop Solenoid



(7) Timer Relay for Stop Solenoid



Engine Stop Solenoid Test

1. Disconnect the **1P** connector (2) from the engine stop solenoid.
2. Remove the engine stop solenoid from the engine.
3. Connect the jumper leads from the battery positive terminal to the **1P** connector, and from the battery negative terminal to the engine stop solenoid body.
4. If the solenoid plunger is not attracted, the engine stop solenoid is faulty.

(1) Stop Solenoid
(2) **1P** Connector

(3) Battery (12 V)

W1031071

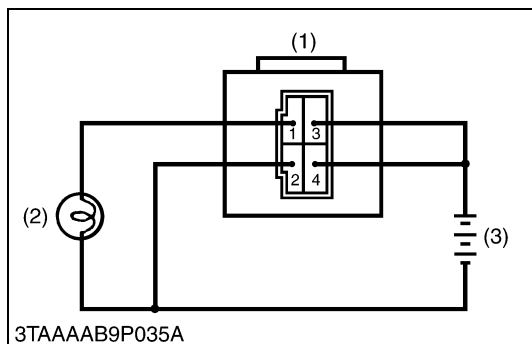
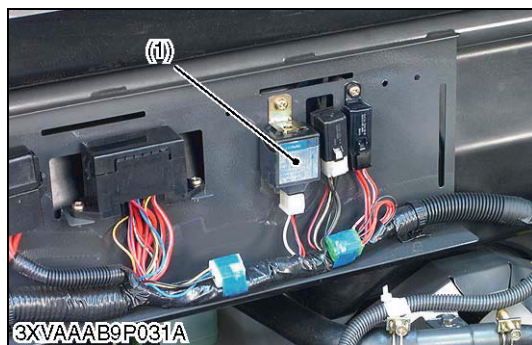
Timer Relay Connector Voltage

1. Disconnect the connector from the timer relay after turning the main switch off.
2. Measure the voltage with a voltmeter across the connector terminal **4** and chassis.
3. Turn the main switch on, and measure the voltage across the connector terminal **3** and chassis.
4. If these voltages differ from the battery voltage, the wiring harness or main switch is faulty.

Voltage	Connector terminal 4 - chassis	Approx. battery voltage
	Connector terminal 3 - chassis	Approx. battery voltage

(1) Timer Relay

W1031640



Test of Timer Relay

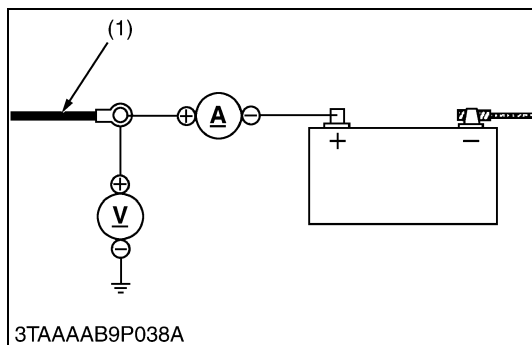
1. Remove the timer relay from the tractor.
2. Connect jumper leads across the battery positive terminal and the timer relay terminal 3, and across the battery positive terminal and the timer relay terminal 4.
3. Connect jumper leads across the battery negative terminal and the timer relay terminal 2, and across the battery negative terminal and the bulb terminal.
4. Connect jumper lead across the timer relay terminal 1 and the bulb terminal.
5. The bulb lights up when disconnecting a jumper lead from the terminal 3 and goes off 6 to 13 seconds later, the timer relay is proper.

(1) Timer Relay
(2) Load (Lamp)

(3) Battery (12V)

W1031988

(8) Charging System



Battery Charging Current

1. After starting the engine, disconnect the battery positive cord (+), and connect an ammeter and voltmeter. Then switch on all electrical loads (such as head lights) and measure the charging current.

NOTE

- Connect an ammeter only after starting the engine.
- When the electrical loads is considerably low or the battery is fully charged, the specified reading may not be obtained.

Factory spec.	Current	14 to 15 A
	Voltage	14 to 15 A
	Dynamo speed	5200 min ⁻¹ (rpm)

(1) Battery Positive Cord

W1032497