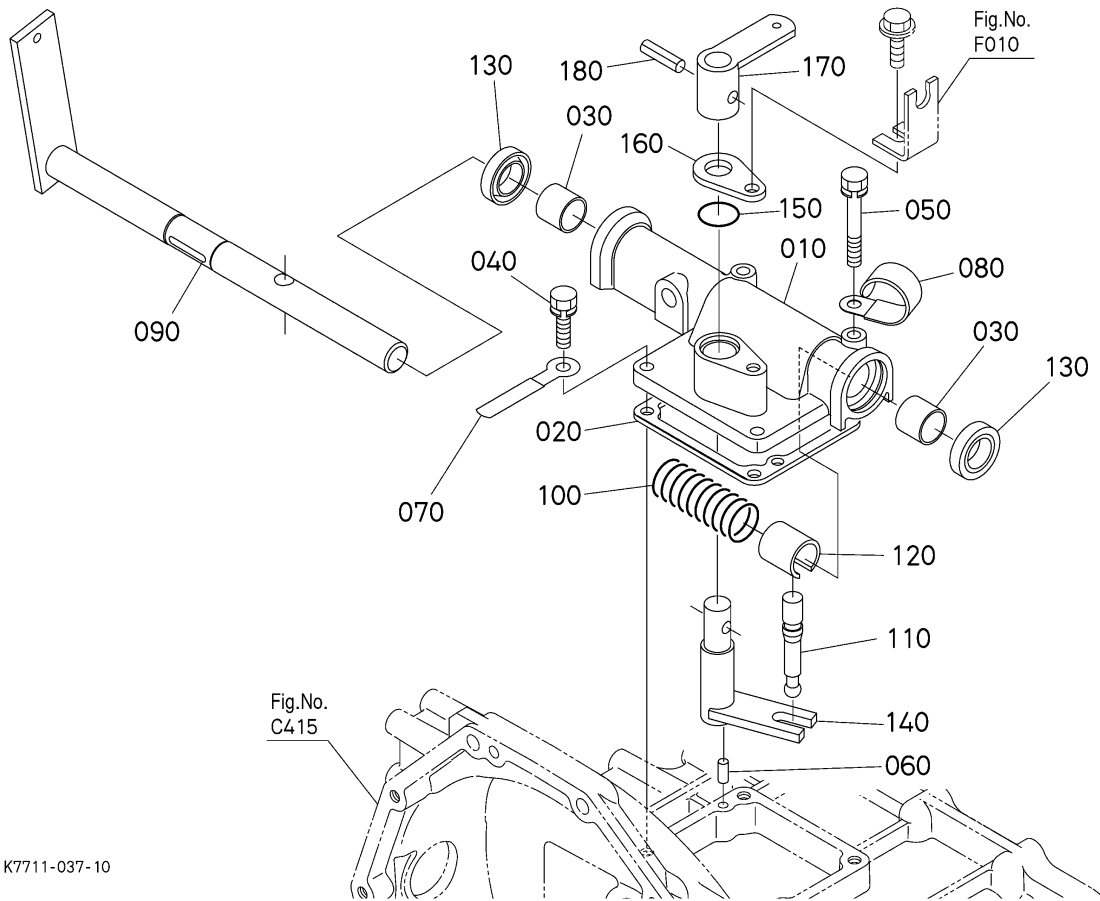


RTV1100CR -> SPEED CHANGE -> D21000 RANGE GEAR ARM ##
RTV1100CR

Update Date: 01/31/2018, Printing Date: 09/08/2020



RTV1100CR -> SPEED CHANGE -> D21000 RANGE GEAR ARM ## RTV1100CR

Update Date: 01/31/2018, Printing Date: 09/08/2020

Interchangeable =, Not Interchangeable NI, New for Old >>, Old for New <<

No	Part Number	Part Name	Qty	RoundUp	IC	S/N	Remarks	Kg
010	K7561-13312	COVER(SHIFT SUB)	1					0.99
020	K7561-13370	GASKET(COVER)	1					0.0044
030	08511-02020	BUSH	2					0.022
040	01123-50825	BOLT,SEMS	2					0.0286
050	01123-50855	BOLT,SEMS	2					0.044
060	05012-00614	PIN,STRAIGHT	2					0.0088
070	13824-67580	CLANP,CORD	1					0.0132
080	12234-67580	CLANP,CORD	1					0.0264
090	K7561-13322	SHAFT(SUB ARM)	1					2.046
100	K7561-13360	SPRING	1					0.011
110	6C040-18252	ARM(MAIN SHIFT)	1					0.099
120	6C040-18230	COLLAR	1					0.0726

RTV1100CR -> SPEED CHANGE -> D21000 RANGE GEAR ARM ## RTV1100CR

Update Date: 01/31/2018, Printing Date: 09/08/2020

Interchangeable =, Not Interchangeable NI, New for Old >>, Old for New <<

No	Part Number	Part Name	Qty	RoundUp	IC	S/N	Remarks	Kg
130	6C040-18290	SEAL,OIL	2					0.0198
140	K7561-13330	ARM(SUB SELECT)	1					0.484
150	04816-00200	O RING	1					0.0066
160	K7561-13350	STOPPER	1					0.0396
170	K7561-13340	LEVER(SUB SELECT)	1					0.242
180	05411-00836	PIN,SPRING	1					0.0176