

INSTALLATION MANUAL

SFL-27 ROPS

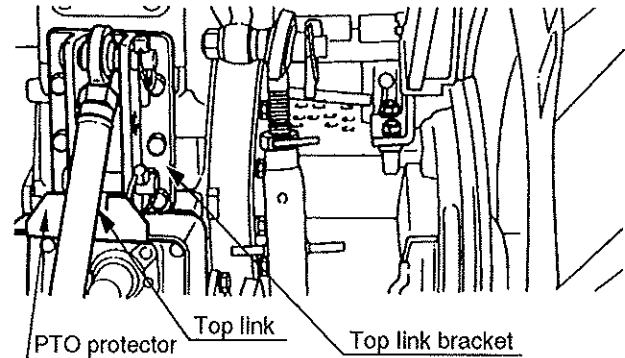
READ ALL INSTRUCTIONS BEFORE MOUNTING THE ROPS

SUITABLE TRACTOR

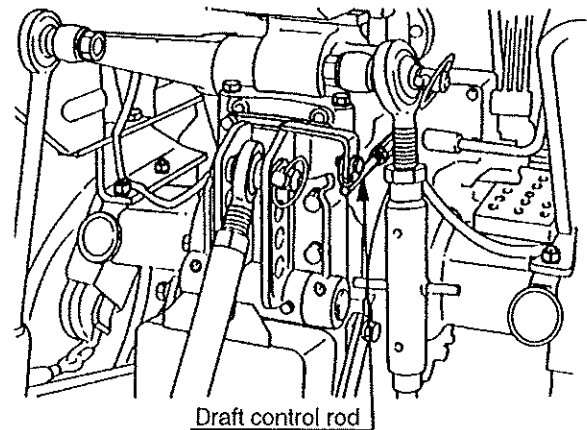
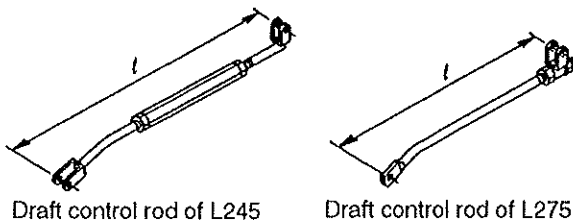
SFL-27 : L185, L245, L235, L275 TRACTOR

1. PREPARATION FOR ASSEMBLY

- (1) Remove the top link, the top link bracket, and the PTO protector.



- (2) For the tractors equipped with draft control, measure the dimension "ℓ" of the draft control rod and remove it.



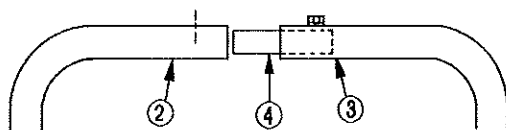
2. INSTALLATION OF SFL-27 ROPS

NOTE :

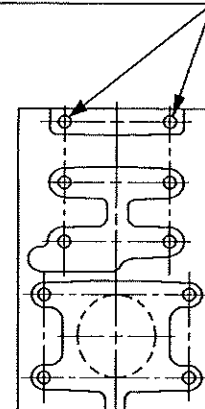
Do not tighten any bolts or nuts firmly until most components are attached onto the tractor.

● For the tractor without draft control

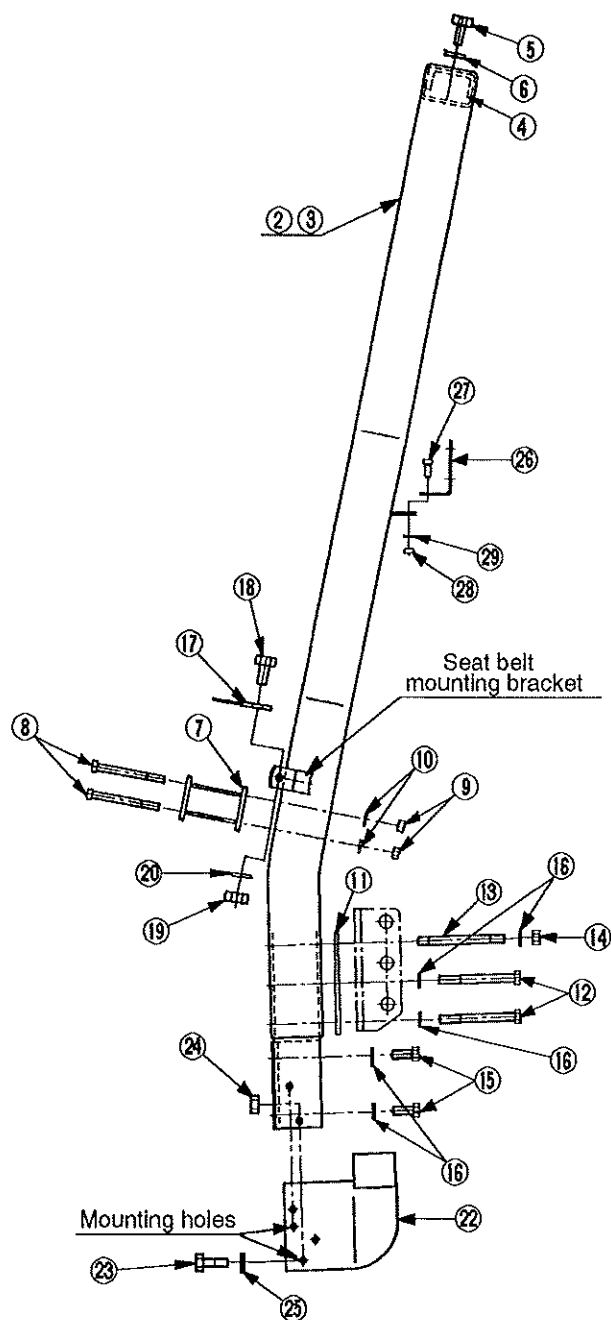
- (1) Install the stud bolts (13) at the back of the transmission case as shown at right.
- (2) Tighten the connector (4) to the frame RH (3) with the 9/16 bolt (5) and 9/16 spring washer (6).



Position of stud bolts



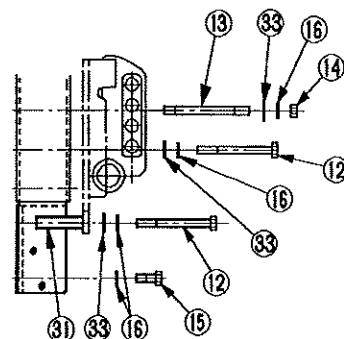
- (3) Install the frame RH (3) and then the frame LH (2) to the back of the transmission case and tighten them with M12 bolts (15).
- (4) Attach the plate 3 (11) and the top link bracket to the frames (2) (3) and tighten them with M12 bolts (12), M12 nuts (14) and M12 spring washers (16).
- (5) Install the holder (7) to the frame (2) (3) and tighten them with 3/8" bolts (8), 3/8" nuts (9) and 3/8" spring washers (10).
- (6) Tighten the connector (4) to the frame LH (2) with 9/16" bolt (5) and 9/16" spring washer (6).
- (7) After all bolts and nuts are fastened securely, tighten them with the following torque.
 - Bolt (5) 15.2~18.3 kgf•m (110~132 ft-lbs)
 - Bolt (8) 4.8~5.8 kgf•m (35~42 ft-lbs)
 - Bolt (12) (15) . . . 9.2~10.5 kgf•m (66.5~76 ft-lbs)
 - Nut (14) 6.4~7.4 kgf•m (46~54 ft-lbs)
- (8) Install the PTO protector (22) on the frames (2) (3) with 5/16" bolts (23), 5/16" nuts (24) and 5/16" spring washers (25), and tighten them with the following torque.
 - 2.35~2.84 kgf•m (17.0~20.5 ft-lbs)
- (9) Install the bracket (26) with 5/16" bolts (27), 5/16" nuts (28) and 5/16" spring washers (29) as shown right, and tighten them with the following torque.
 - 2.35~2.84 kgf•m (17.0~20.5 ft-lbs)
- (10) Install the seat belt (17) on the seat belt mounting bracket with 3/8" bolts (18), 3/8" nuts (19) and 3/8" spring washers (20), and tighten them with the following torque.
 - 4.8~5.8 kgf•m (35~42 ft-lbs)



● For the tractor with draft control

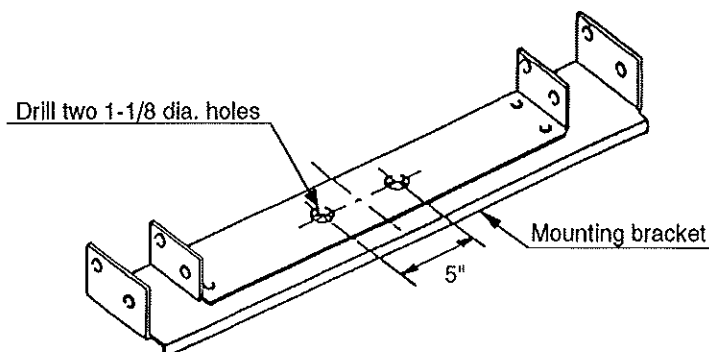
Only the different parts from the tractor without the draft control are stated.

- (1) Use M12 plain washers (33) to install M12 bolts (12) and M12 nuts (14).
- (2) Do not use the plate 3 (11).
- (3) Install the frames (2) (3) with the collar 1 (31) and M12 bolts (12).
- (4) [For L245 tractor]
Install the turnbuckle (32) and set the dimension "ℓ" to the initial value + 76 mm.
[For L275 tractor]
Install the draft control rod (34) and set the dimension "ℓ" to the initial value + 76 mm.



3. INSTALLATION OF CANOPY

- (1) When installing BL1143M CANOPY, it is necessary to make holes on the mounting bracket (70010-00777), if no hole exist.
- (2) Drill two 1-1/8 dia. holes 5" apart and centered from the middle of the mounting bracket so that the ROPS mounting bolts will not hit the canopy mounting bracket.



4. NOTE ON THE TOP LINK LENGTH

Attaching point of the top link is moved rearward approximately 50 mm (2") after mounting the ROPS. Some implements may not be raised high enough even with the adjusting of the top link. In that case, please order shorter top link listed below.

Part No. 35240-99011 Top Link Assy.

5. PARTS LIST

No.	Code No.	DESCRIPTION	UNIT		REMARKS
			L245	L275	
1	35378-2000-0	ROPS ASSY	1	1	
2	35378-2100-0	FRAME LH	1	1	
3	35378-2200-0	FRAME RH	1	1	
4	32751-3485-0	CONNECTOR, ROPS	1	1	
5	75599-04625	HEX. BOLT	2	2	9/16-18 UNF x 1 1/4
6	75599-33016	WASHER, SPRING LOCK	2	2	9/16
7	35378-2401-0	HOLDER	1	1	
8	75599-04380	HEX. BOLT	4	4	3/8-24 UNF x 4
9	75599-31023	HEX. NUT	4	4	3/8-24 UNF
10	75599-33013	WASHER, SPRING LOCK	4	4	3/8
11	35378-2505-0	PLATE 3	1	1	
12	01176-51202	HEX. BOLT	4	4	M12 x 1.25 x 110mm (9T)
13	35378-1506-0	STUD BOLT	2	2	M12 x 1.25
14	02176-50120	HEX. NUT	2	2	M12 x 1.25 (6T)
15	01176-51230	HEX. BOLT	4	4	M12 x 1.25 x 30mm (9T)
16	04512-50120	WASHER, SPRING LOCK	10	10	M12
17	35378-1701-0	SEAT BELT ASSY	1	1	
18	75599-04320	HEX. BOLT	2	2	3/8-24 UNF x 1
19	75599-31023	HEX. NUT	2	2	3/8-24 UNF
20	75599-33013	WASHER, SPRING LOCK	2	2	3/8
21	35378-2605-0	MANUAL, INSTRUCTION	1	1	
22	35378-2501-0	PROTECTOR, PTO	1	1	

No.	Code No.	DESCRIPTION	UNIT		REMARKS
			L245	L275	
23	75599-02215	HEX. BOLT	4	4	5/16-24 UNF x 3/4
24	75599-31022	HEX. NUT	4	4	5/16-24 UNF
25	75599-33012	WASHER, SPRING LOCK	4	4	5/16
26	TA040-2943-0	BRACKET (SMV)	1	1	
27	75599-02215	HEX. BOLT	2	2	5/16-24 UNF x 3/4
28	75599-31022	HEX. NUT	2	2	5/16-24 UNF
29	75599-33012	WASHER, SPRING LOCK	2	2	5/16
30	32430-9990-0	KIT LABEL, WARNING	1	1	
*31	35378-3601-0	COLLAR 1	(2)	(2)	
*32	35378-2602-0	TURNBUCKLE 2	(1)	-	
*33	04013-50120	WASHER, PLAIN	(6)	(6)	M12
*34	35378-2603-0	ROD DRAFT CONTROL	-	(1)	

[NOTE]

- Parts marked with " * " are necessary only for the tractor equipped with draft control.

If parts are needed, order the following kit.

For L245 : 35378-0220-0 L245 SPACER KIT

For L275 : 35378-0230-0 L275 SPACER KIT

