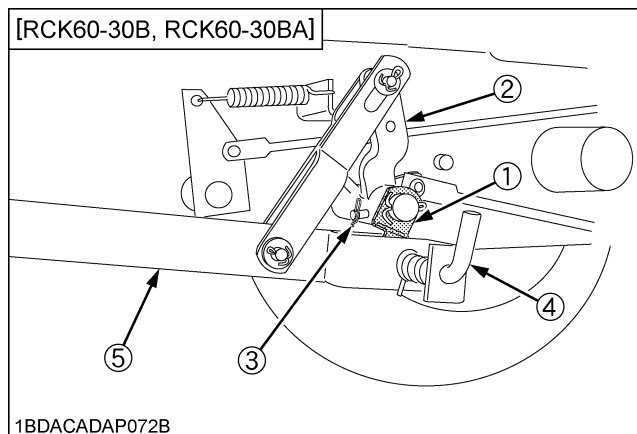
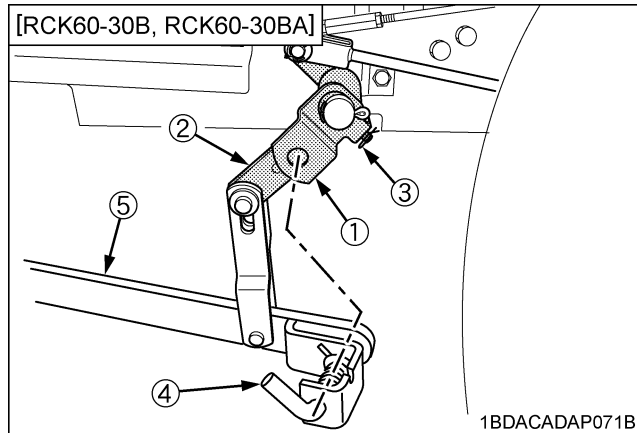
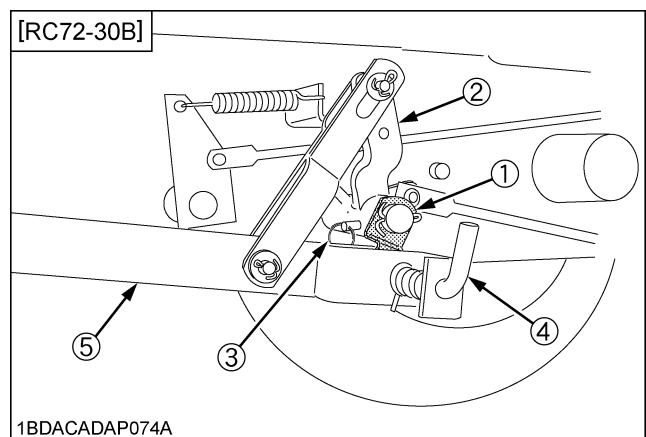
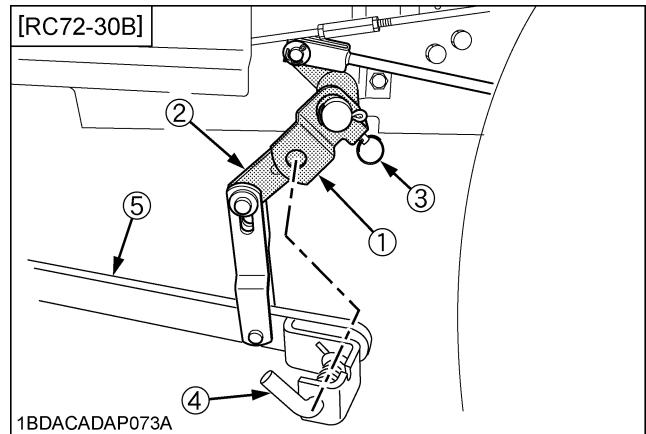


NOTE :

- To hold the mower links
 - (1) Remove the rue ring cotter pin (RCK60-30B, RCK60-30BA) and snap ring (RC72-30B) from the link stoppers. Reinstall it to the lift arms.
 - (2) Rehook the rear links to the link stoppers with the L pins. This will keep the rear links out of the way.
- Do not use the link stopper with the mower deck mounted.



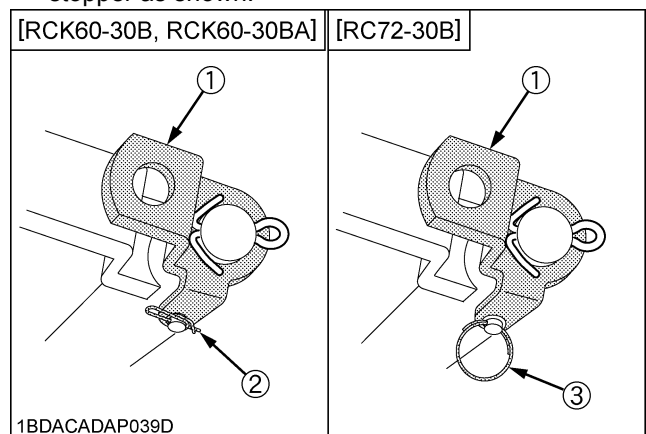
- (1) Link stopper
(2) Lift arm
(3) Rue ring cotter pin
- (4) L pin
(5) Rear link



- (1) Link stopper
(2) Lift arm
(3) Snap ring ($\phi 30$)
- (4) L pin
(5) Rear link

NOTE :

- When remounting the mower deck, reinstall the link stopper as shown.



- (1) Link stopper
(2) Rue ring cotter pin
(3) Snap ring