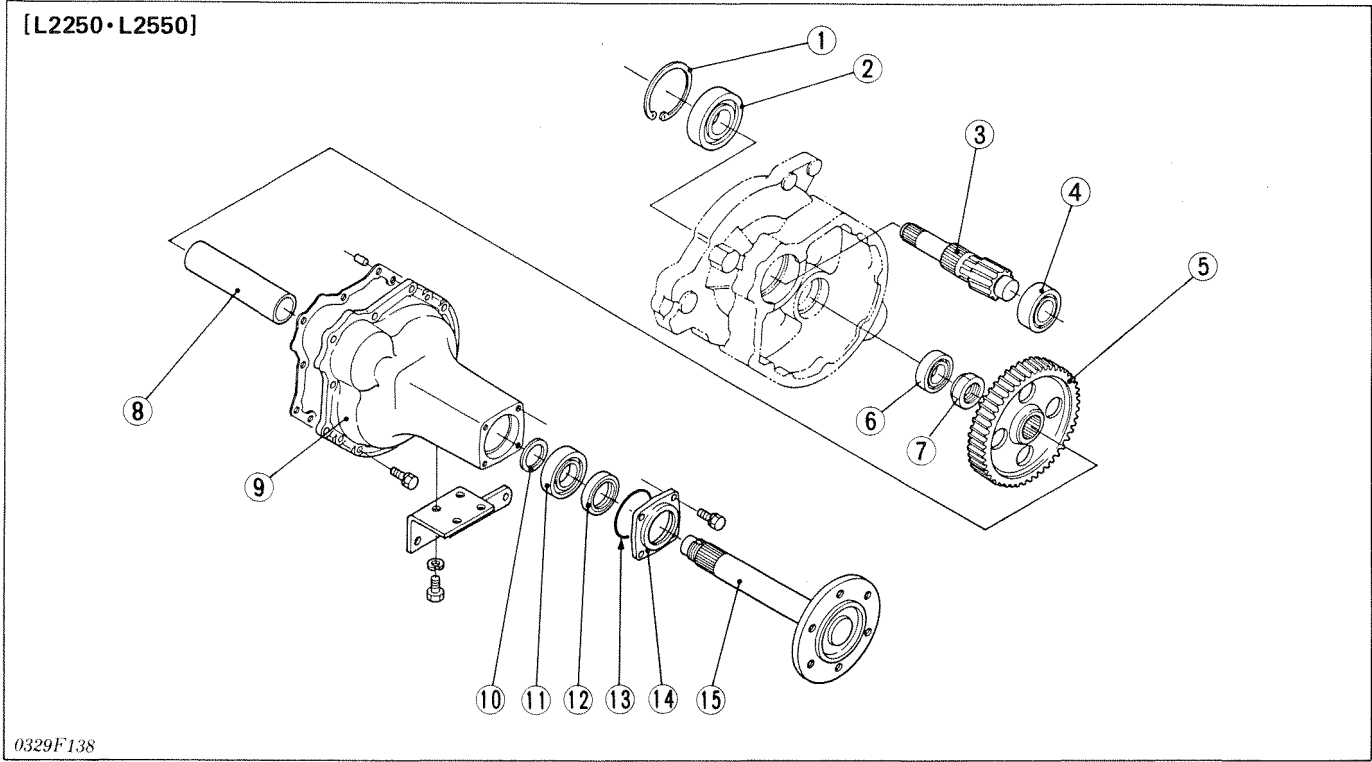


[2] REAR AXLE

DISASSEMBLING AND ASSEMBLING



- | | | | |
|-----------------------------|------------------|--------------------|----------------------|
| (1) Internal Snap Ring | (5) 53T Gear | (9) Rear Axle Case | (13) O-ring |
| (2) Ball Bearing | (6) Ball Bearing | (10) Thrust Washer | (14) Axle Case Cover |
| (3) Differential Gear Shaft | (7) Staking Nut | (11) Ball Bearing | (15) Rear Axle |
| (4) Ball Bearing | (8) Spacer | (12) Oil Seal | |

Separating Rear Axle

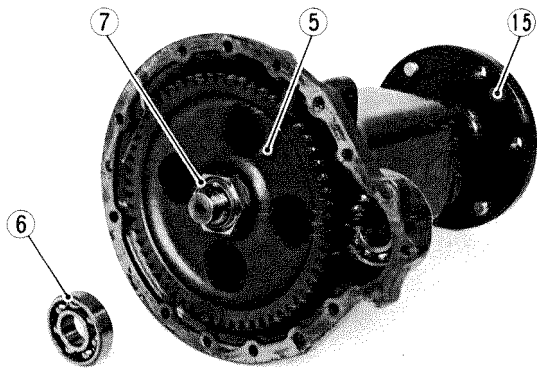
- See page S.S-19.

Rear Axle

1. Remove the ball bearing (6) with a puller.
2. Remove the stake of staking nut (7).
3. Secure the rear axle (15) in a vise and remove the staking nut.
4. Take out the 53T gear (5), spacer (8) and thrust washer (10).
5. Tap out the rear axle.

(When reassembling)

- Apply grease to the oil seal (12) and install it, noting its direction.
- Replace the staking nut with new one, and after tightening it to specified torque, stake it firmly.



Tightening torque	Staking nut	196 to 245 N・m 20 to 25 kgf・m 145 to 181 ft-lbs
-------------------	-------------	---