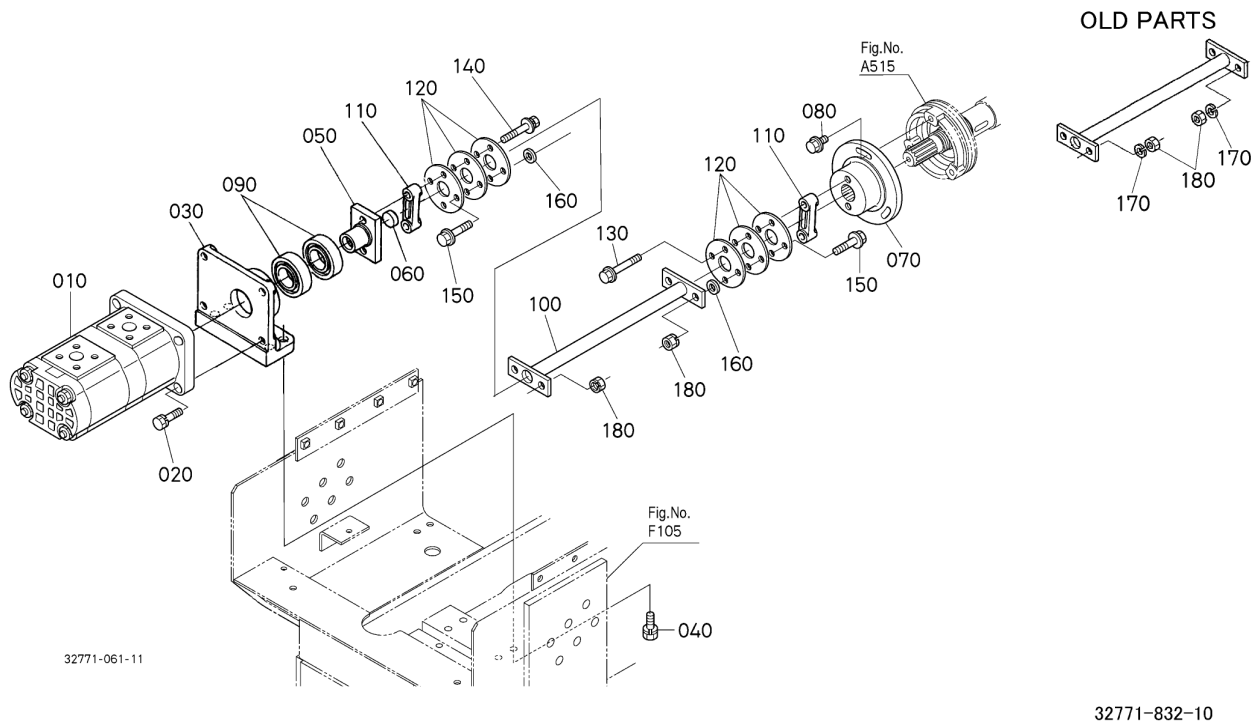


L48 -> HYDRAULIC SYSTEM -> H13000 HYDRAULIC PUMP(FRONT) ## L48

Update Date: 07/28/2014, Printing Date: 11/08/2019



L48 -> HYDRAULIC SYSTEM -> H13000 HYDRAULIC PUMP(FRONT) ## L48

Update Date: 07/28/2014, Printing Date: 11/08/2019

Interchangeable =, Not Interchangeable NI, New for Old >>, Old for New <<

No	Part Number	Part Name	Qty	RoundUp	IC	S/N	Remarks	Kg
010	32771-76200	PUMP, HYDRAULIC	1					10.604
020	01123-50835	BOLT, SEMS	4					0.044
030	32751-10890	BRACKET, FRONT PUMP	1					3.3
040	01133-51030	BOLT, SEMS	4					0.055
050	32751-10910	COUPLING	1					0.462
060	06311-75020	PLUG, EXPANSION	1					0.0088
070	32771-10920	COUPLING	1					2.2
080	01754-50818	BOLT, FLANGE	3					0.0242
090	32590-10830	BEARING, BALL	2					0.22
100	32771-10930	SHAFT, COUPLING	1			<=60260	32771-9970-2 IMPROVED KIT	1.144
100	32771-10932	SHAFT, COUPLING	1		>>	>=60261	32771-9970-2 IMPROVED KIT	1.144
110	31351-17870	SPACER	2					0.066
120	31351-17880	DISK, COUPLING	6					0.022

L48 -> HYDRAULIC SYSTEM -> H13000 HYDRAULIC PUMP(FRONT) ## L48

Update Date: 07/28/2014, Printing Date: 11/08/2019

Interchangeable =, Not Interchangeable NI, New for Old >>, Old for New <<

No	Part Number	Part Name	Qty	RoundUp	IC	S/N	Remarks	Kg
120	32771-10850	PLATE,COUPLING	6		=			0.0198
130	01754-50840	BOLT,FLANGE	2					0.044
140	01125-50835	BOLT,W SEMS	2					0.0374
150	01754-50825	BOLT,FLANGE	4					0.022
160	04013-50080	WASHER,PLAIN	4					0.0066
170	04512-60080	WASHER,SPRING	4			<=61430		0.0044
180	02114-50080	HEX.NUT	4			<=61430		0.011
180	16429-92010	NUT WITH LOCK WASHER	4		>>	>=61431		0.0154