

[2] L4701

Model			L4701		
			Manual Transmission		HST
			2WD	4WD	
Engine	Model		V2403-CR-E4		
	Type		Direct injection, vertical, water-cooled, 4-cycle diesel		
	Number of cylinders		4		
	Total displacement		2.434 L (148.5 cu.in.)		
	Bore and stroke		87 × 102.4 mm (3.4 × 4.0 in.)		
	Rated revolution		2600 min ⁻¹ (rpm)		
	Low idling revolution		800 min ⁻¹ (rpm)		
	Net power*		33.4 kW (44.8 HP) / 2600 min ⁻¹ (rpm)		
	PTO power* (factory observed)		29.3 kW (39.3 HP) / 2600 min ⁻¹ (rpm)	28.2 kW (37.8 HP) / 2600 min ⁻¹ (rpm)	
	Maximum torque: Gross		146.2 N·m (107.8 lbf·ft)		
	Battery capacity		12 V, RC: 120 min, CCA: 600 A		
Capacities	Fuel tank		51 L (13.5 U.S.gals, 11 Imp.gals)		
	Engine crankcase (with filter)		8.2 L (8.7 U.S.qts, 7.2 Imp.qts)		
	Engine coolant		6.5 L (6.9 U.S.qts, 5.7 Imp.qts)		
	Transmission case		40 L (10.6 U.S.gals, 8.8 Imp.gals)		
Dimensions	Overall length (without 3p)		3120 mm (122.8 in.)	3035 mm (119.5 in.)	
	Overall width (min. tread)		1585 mm (62.4 in.)		
	Overall height (with ROPS)		2330 mm (91.7 in.)		
	Wheel base		1850 mm (72.8 in.)	1845 mm (72.6 in.)	
	Min. ground clearance		385 mm (15.2 in.)		
	Tread	Front	1280 mm (50.4 in.), 1380 mm (54.3 in.), 1480 mm (58.3 in.), 1580 mm (62.2 in.)	1155 mm (45.5 in.)	
		Rear	1180 mm (46.5 in.), 1200 mm (47.2 in.), 1300 mm (51.2 in.), 1450 mm (57.1 in.),1545 mm (60.8 in.)		
Weight (with ROPS)			1460 kg (3219 lbs)	1495 kg (3296 lbs)	1500 kg (3307 lbs)
Traveling system	Standard tire size	Front	7.5L-15	8.3-16	
		Rear	14.9-24		
	Clutch		Dry type single stage		—
	Steering		Hydrostatic power steering		
	Transmission		Gear shift, 8 forward and 8 reverse		Hydrostatic transmission 3 range speed
	Braking system		Mechanical, Wet disk type		
	Min. turning radius (with brake)		2.7 m (8.9 feet)	2.6 m (8.5 feet)	
Hydraulic unit	Hydraulic control system		Position control		
	Pump capacity		29.4 L (7.8 U.S.gals, 6.47 Imp.gals) /min.		
	Three point hitch		Category 1		
	Max. lift force	At lift points	1300 kg (2870 lbs)		
		24 in. behind lift points	1053 kg (2320 lbs)		
System pressure		17.7 MPa (180 kgf/cm ² , 2560 psi)			
PTO	Rear PTO	PTO shaft size	SAE 1-3/8, 6 splines		
	PTO / Engine speed		540 min ⁻¹ (rpm) / 2475 min ⁻¹ (rpm)		540 min ⁻¹ (rpm) / 2640 min ⁻¹ (rpm)

■ NOTE

- *Manufacturer's estimate. The company reserve the right to change the specifications without notice.

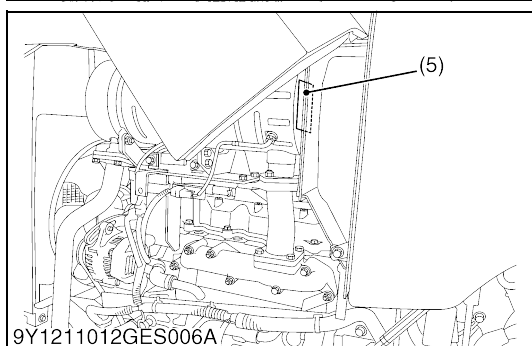
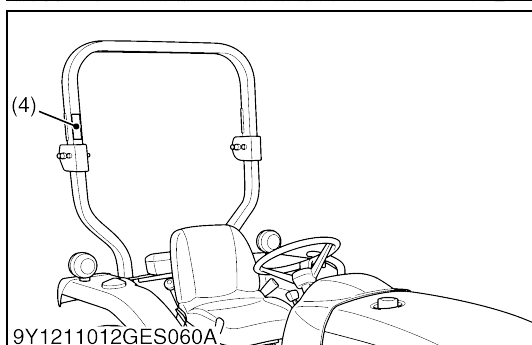
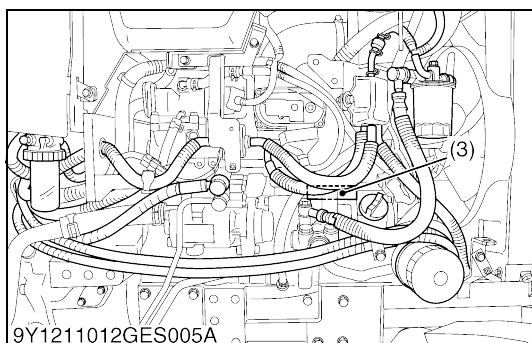
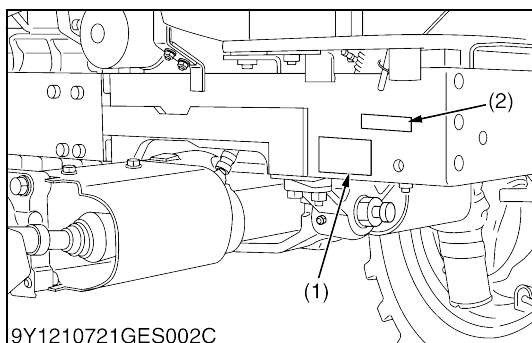
9Y1211012INI0009US0

(2) L4701

When contacting your local KUBOTA distributor, always specify engine serial number, tractor serial number and hour meter reading.

- | | |
|----------------------------------|--|
| (1) Tractor Identification Plate | (4) ROPS Identification Plate (ROPS Serial Number) |
| (2) Tractor Serial Number | (5) Diesel Particulate Filter (DPF) Serial Number |
| (3) Engine Serial Number | |

9Y1211012GEG0002US0




[2] E4B ENGINE

[Example: Engine Model Name V2403-CR-TE4]


The emission controls previously implemented in various countries to prevent air pollution will be stepped up as Nonroad Emission Standards continue to change. The timing or applicable date of the specific Nonroad Emission regulations depends on the engine output classification.

Over the past several years, KUBOTA has been supplying diesel engines that comply with regulations in the respective countries affected by Nonroad Emission regulations. For KUBOTA Engines, E4B will be the designation that identifies engine models affected by the next emission phase (See the table below).

When servicing or repairing ###-E4B series engines, use only replacement parts for that specific E4B engine, designated by the appropriate E4B KUBOTA Parts List and perform all maintenance services listed in the appropriate KUBOTA Operator's Manual or in the appropriate E4B KUBOTA Workshop Manual. Use of incorrect replacement parts or replacement parts from other emission level engines (for example: E3B engines), may result in emission levels out of compliance with the original E4B design and EPA or other applicable regulations. Please refer to the emission label located on the engine head cover to identify Output classification and Emission Control Information. E4B engines are identified with "EF" at the end of the Model designation, on the US EPA label. Please note: E4B is not marked on the engine.

TYPE :	#####
FAMILY :	#####
APPROVAL NUMBER:	####/(P):####/#####
 KUBOTA Corporation	
####	

(1) (2)

EMISSION CONTROL INFORMATION	
THIS ENGINE MEETS 2012 ##### EMISSION REGULATIONS FOR U.S. EPA AND CALIFORNIA NONROAD CYCLES.	
 KUBOTA Corporation	
MODEL :	###-EF-#### ENGINE DISP. : ####
FAMILY :	C-###
POWER :	## kW / ### rpm CATEGORY: ## - ## kW
VALVE CLEARANCE (COLD) :	IN ## mm EX ## mm
ECS :	###
ULTRA LOW SULFUR DIESEL FUEL ONLY	
DEL. ASSY :	####

9Y1200165GES001A

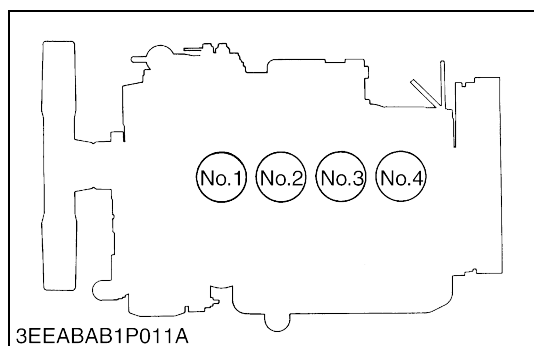
Category (1)	Engine output classification	EU regulation
K	From 19 to 37 kW	STAGE IIIB
P	From 37 to less than 56 kW	STAGE IIIB
N	From 56 to less than 75 kW	STAGE IIIB
M	From 75 to less than 130 kW	STAGE IIIB

Category (2)	Engine output classification	EPA regulation
EF	Less than 19 kW	Tier 4
	From 19 to less than 56 kW	Interim Tier 4
	From 56 to less than 75 kW	Interim Tier 4
	From 75 to less than 130 kW	Interim Tier 4

- (1) EU regulation engine output classification category
 (2) "E4B" engines are identified with "EF" at the end of the Model designation, on the US EPA label.
 "E4B" designates some Interim Tier 4 / Tier 4 models, depending on engine output classification.

9Y1211012GEG0003US0

[3] CYLINDER NUMBER



The cylinder numbers of KUBOTA diesel engine are designated as shown in the figure.

The sequence of cylinder numbers is given as No.1, No.2, No.3 and No.4 starting from the gear case side.

9Y1211012GEG0004US0