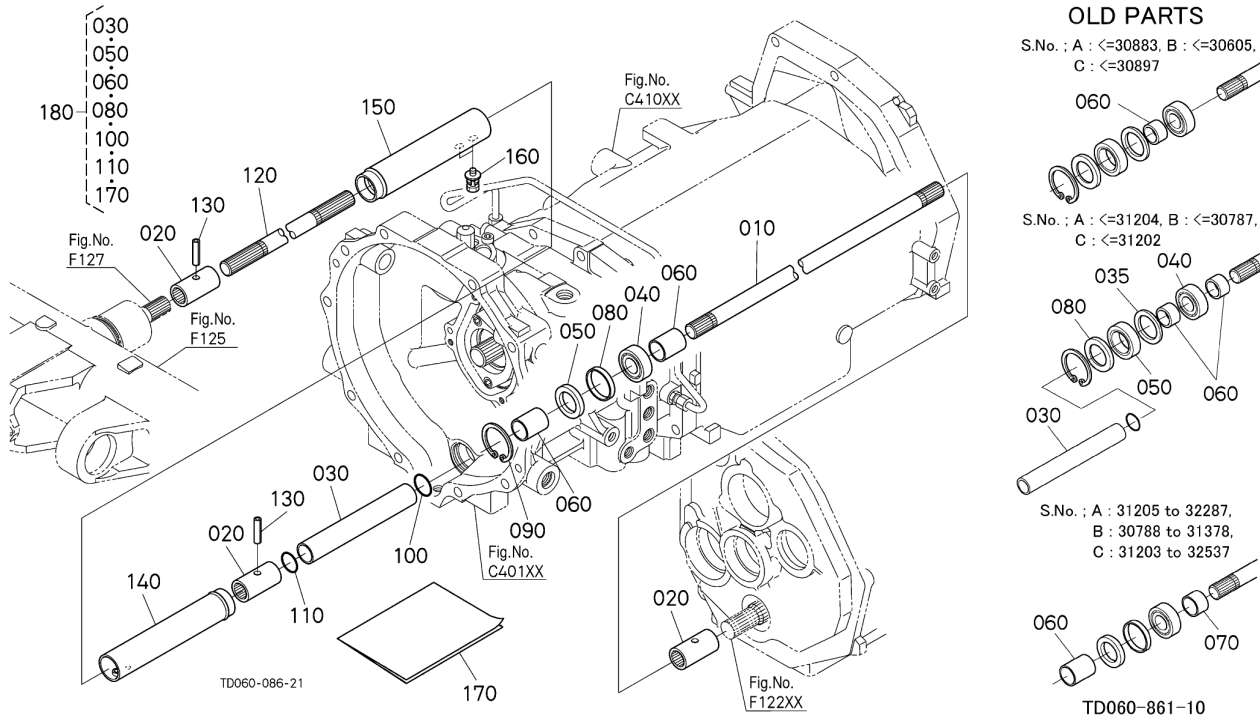


L4630DT/GST(C)/HST -> FRONT AXLE/CHASSIS -> F12002 PROPELLER SHAFT [HST TYPE] ## L4630DT/GST(C)/HST

Update Date: 01/11/2017, Printing Date: 12/04/2019



L4630DT/GST(C)/HST -> FRONT AXLE/CHASSIS -> F12002 PROPELLER SHAFT [HST TYPE] ## L4630DT/GST(C)/HST

Update Date: 01/11/2017, Printing Date: 12/04/2019

Interchangeable =, Not Interchangeable NI, New for Old >>, Old for New <<

No	Part Number	Part Name	Qty	RoundUp	IC	S/N	Remarks	Kg
010	TD060-14640	SHAFT PROPELLER	1			<=30722		5.5
010	TD060-14642	SHAFT,PROPELLER	1		>>	>=30723		5.5
010	TD060-14643	SHAFT,PROPELLER	1		>>	>=33804		5.5
020	T0070-14710	COUPLING	3					0.352
020	H3130-44520	COUPLING	3		>>			0.352
030	TD060-14720	SPACER PROPELLER S/F	1			>=30606	NOT SALE ORDER BY REF.No.180.	0.0
030	TD060-14722	SPACER(SHAFT,PROP.)	1		NI	>=30788		0.561
035	TD060-14660	WASHER PROP.SHAFT	1			<=30787		0.022
040	TD060-14590	BEARING,BALL	1					0.088
050	TD060-14600	SEAL OIL	1			<=30787		0.022
050	09500-28427	SEAL,OIL	1		NI	>=30788		0.022
060	14301-62450	COLLAR OIL SEAL	1			<=30605		0.0264
060	14301-62450	COLLAR OIL SEAL	2			>=30606		0.0264

L4630DT/GST(C)/HST -> FRONT AXLE/CHASSIS -> F12002 PROPELLER
SHAFT [HST TYPE] ## L4630DT/GST(C)/HST

Update Date: 01/11/2017, Printing Date: 12/04/2019

Interchangeable =, Not Interchangeable NI, New for Old >>, Old for New <<

No	Part Number	Part Name	Qty	RoundUp	IC	S/N	Remarks	Kg
060	52600-15550	SLEEVE	1		NI	>=30788		0.055
060	52600-15550	SLEEVE	2			>=31379		0.055
070	14301-62450	COLLAR OIL SEAL	1			<=31378		0.0264
080	TD060-14652	SPACER	1			<=30605		0.033
080	TD060-14653	SPACER	1		NI	>=30606		0.033
080	TD060-14654	SPACER,PROPELLER SHAFT	1		>>	>=30788		0.022
090	04611-00420	CIR-CLIP,INTERNAL	1					0.0132
100	TD060-82180	O RING	1			>=30606		0.0022
100	TA040-82180	O RING	1		=			0.0022
110	TA040-82180	O RING	1			>=30606		0.0022
120	TD060-14630	SHAFT,PROP.	1					1.98
130	05411-00430	PIN SPRING	2					0.0044
140	TD060-14580	COVER(SHAFT,PROP.)	1					0.572
150	TA040-14574	COVER(SHAFT,PROP.)	1					0.726
160	TC050-14590	BOLT,WITH WASHER	2					0.0066
170	---- -	MANUAL ASSEMBLY	1			<=30787		0.0
180	TD060-98100	KIT SLEEVE	1			<=30787		0.66