

INSTRUCTION MANUAL FRONT WORKING LIGHT KIT for KUBOTA TRACTOR L3560 / L4060 Limited Edition with CAB

■ Assembly Procedure

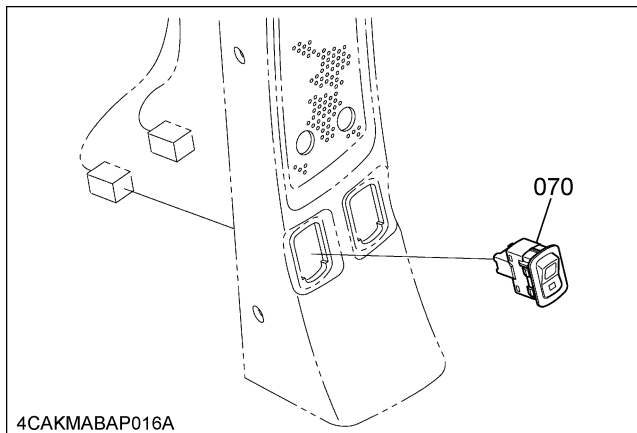
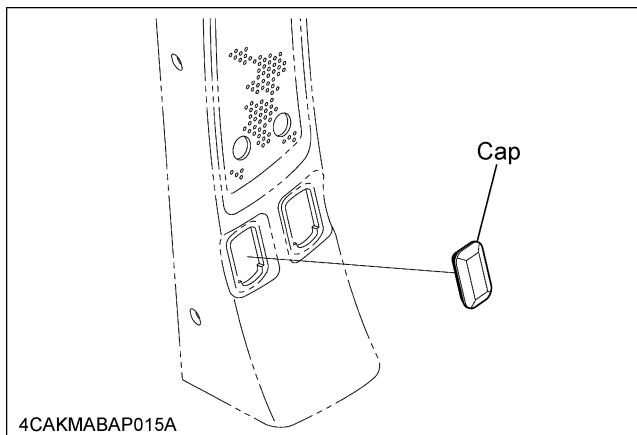


CAUTION

To avoid personal injury:

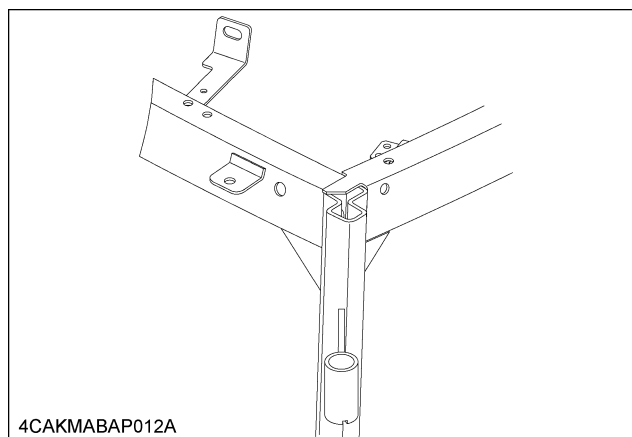
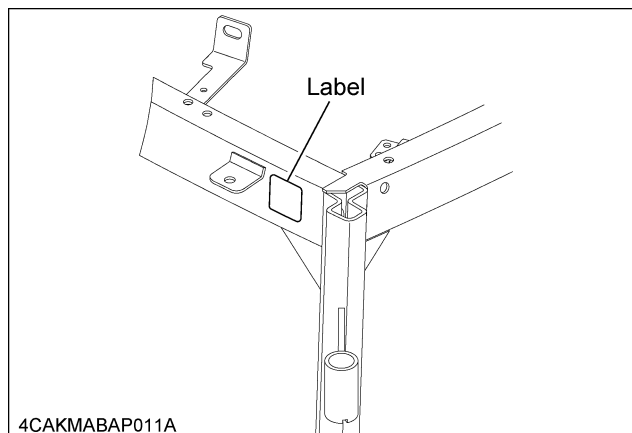
- Before starting work, be sure to disconnect the cable from the negative (-) terminal of the battery.

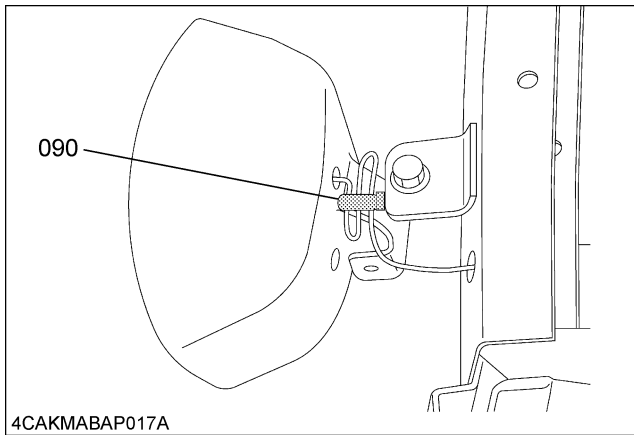
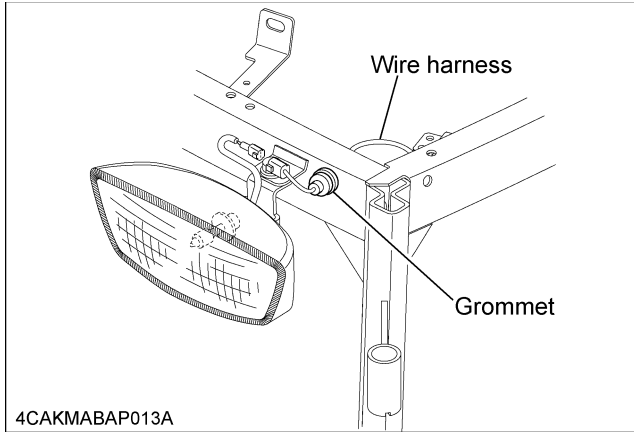
1. Remove the cap and pull out the wire harness. Connect the work light switch (070) to the harness coupler, and then install the work light switch (070) to the inner pillar hole.



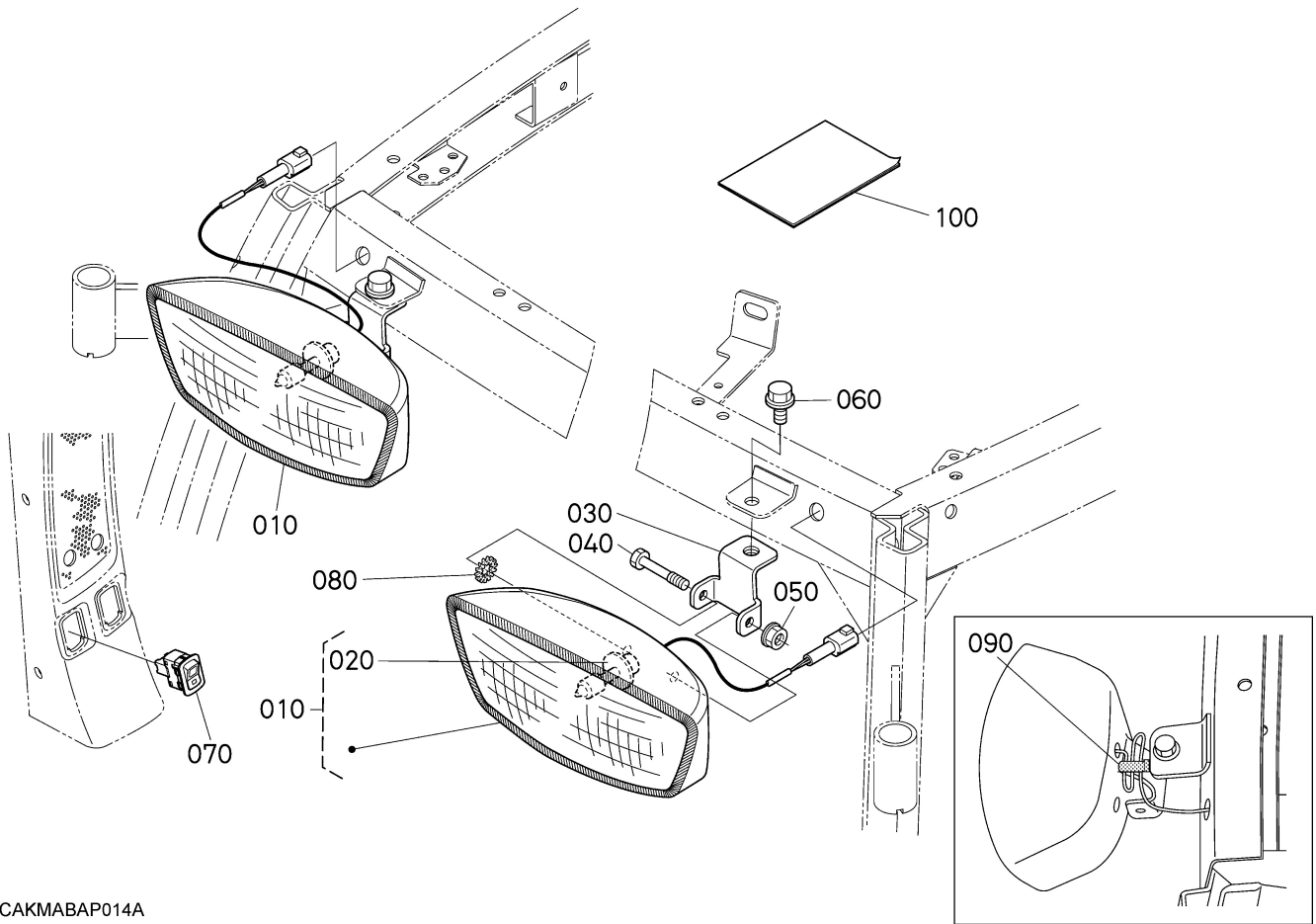
(070) Work light switch

2. Fix the work light (010) to the stay (030) with bolt (040), washer (080) and nut (050).
Secure the stay (030) to the cab frame with bolt (060).
3. Remove the 9 bolts that secure the outer roof and cab frame.
Remove the outer roof from the cab frame.
Release the wire harness in the frame from the cord band, the sponge and the duct tape.
Peel off the label covering the hole. Pull out the wire harness through the hole, and fix the grommet of the wire harness to the hole.
4. Connect the wire harness to the work light (010).
5. Bundle the wire harness with a cord band (090).





■ Parts List



4CAKMABAP014A

REF.No.	PART No.	PART NAME	Q'TY	REMARKS
010	TD350-7530-0	LAMP	2	
020	T1275-9106-0	BULB	2	
030	T1855-7531-0	STAY, WORKING LIGHT	2	
040	T0270-8621-0	BOLT	2	
050	T0270-8622-0	NUT	2	
060	01774-51016	BOLT, FLANGE	2	7T
070	TD350-7536-0	SWITCH (WORK LIGHT)	1	
080	04413-50060	WASHER	2	
090	53581-6415-0	BAND, CORD	2	
100	TD320-9730-2	MANUAL, INSTRUCTION	1	This paper