

Service Bulletins

☒ Keywords to search for existing questions/answers TD35014720

Search

☐ View by series / model Note: Can be sorted by "Year", "Series" or "Failure code" by clicking on the arrows in the header bar.

☐ AG Only - Legacy (2020 and older) AG bulletins

☐ CE Only - Legacy (2020 and older) CE bulletins

☐ TSB Only - Technical Service Bulletins*

☐ MSC Only - Mandatory Service Campaigns*

☐ TIB Only - Technical Information Bulletins*

A **Service Bulletin** is a formal advisory to dealers on Kubota approved recommended repairs, update to repair techniques or troubleshooting strategies. It can also be used to inform dealerships about improved parts, service manual updates and Mandatory Field Campaigns. The ultimate purpose of service bulletins is to improve the reliability and or the performance of the equipment.

*These 3 categories only contain bulletins published in 2021 or later. For any campaigns or bulletins posted in 2020 or earlier, please use the AG/CE categories.

SERVICE BULLETIN

No: AG022 - 15 Rev 4

Series: L-series

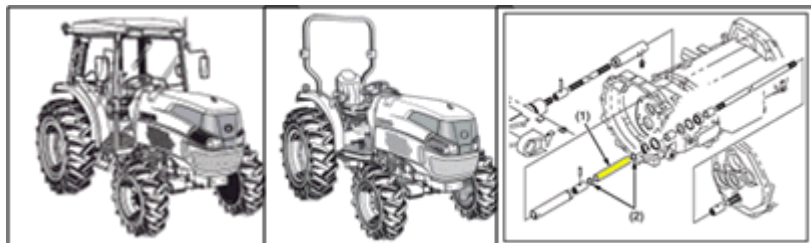
Fail Code: FA07

Date: 08/20/2015

Issued by: Nill Sauv 

Director, Service & Engineering

Subject:	L40, M59, L45 4WD PROPELLER SHAFT >>MANDATORY FIELD CAMPAIGN<<	
Model(s):	L3240HSTCC3, L3240HST-3, L3240DT-3, L3540HSTCC3, L3540HST-3, L3540GST-3, L3940HSTCC3, L3940HST-3, L3940DT-3, L4240HSTCC3, L4240HST-3, L4240GST-3, L4740HSTCC3, L4740HST-3, L5040GST-3, L5240HSTCC3, L5240HST3, L5740HSTCC3, L5740HST3, M59, L45TLB (HST)	
Serial Ranges:	GL40, M59, L45	See below/ voir ci-dessous

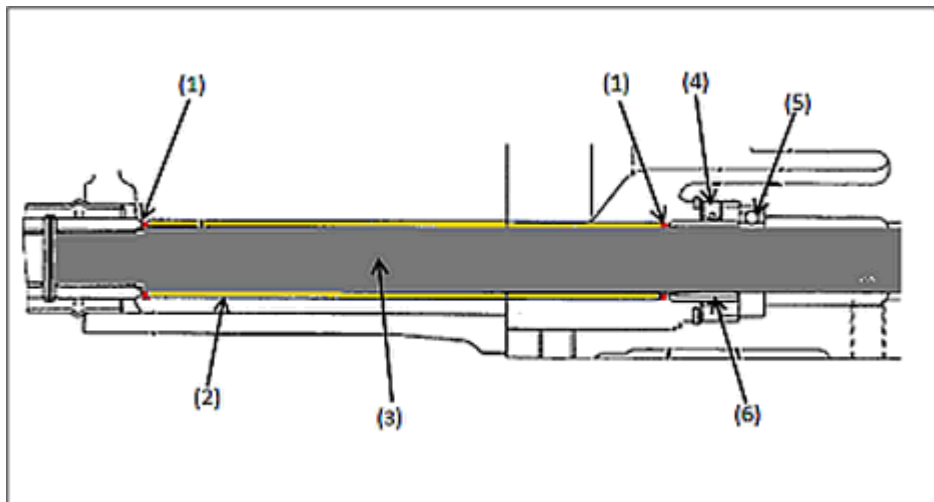


Service Information:

Kubota has found that the 4WD propeller output shaft oil seal(4) may leak without the use of an output shaft spacer(2). This campaign is to prevent a transmission oil leak between the shaft oil seal(4) and sleeve(6) by installing a spacer(2) and o-rings(1) to prevent displacement of the shaft sleeve(6).

Sept 28, 2015 UPDATE: If the output shaft seal is found to be leaking when the spacer is being installed a separate warranty claim may be submitted. See "Allowable Labour Update # 3" below.

Aug 15, 2016 UPDATE: Added L4240HST- 3 units to this campaign, see revised serial number range below.



Refer to attached file for spacer installation instructions.



[Output Shaft Spacer Instructions.pdf](#)

>>>Allowable Labour Update<<<

1) If a tractor is equipped with a Quick Hitch, an additional 2.0hrs will be allowed to R&R the hitch.

A separate warranty claim must be submitted as follows:

- Include the campaign #AG022-15 in the claim.
- Use Labour Code = LMQHR&R (2.0hrs).
- Upload to the claim a clear picture of the tractor with the Quick Hitch installed.
- Upload to the claim a copy of the tractor registration.

2) If the driveshaft couplings or spring pins are seized with rust additional time will be allowed to complete the campaign.

A separate warranty claim must be submitted as follows:

- Provide a clear description of the additional work required.
- Include the campaign #AG022-15 in the claim.
- Use Labour Code T1 = (up to a maximum of 0.5hrs).
- Upload clear pictures of the rusted or seized components to the claim.

3) If the output shaft seal is found to be leaking when the spacer is being installed.

A separate warranty claim must be submitted as follows:

- Upload clear pictures of the leak before starting the repair.
- Include authorization #SFI-A-15-041 in the claim.
- Use FRS Labour Code TLCB-005 "RENEW FRONT WHEEL DRIVE SHAFT CASE OIL SEAL"
- For units out of warranty: Submit a Non Registerable Equipment Claim.

NOTE: If a submitted claims do not include the above information the claim will be denied.

SERIAL NUMBER RANGE

Model Modèle	Serial No. Range Gamme No. Série			Model Modèle	Serial No. Range Gamme No. Série		
#L3240HSTCC3	70621	~	73298	#L4240GST-3	70460	~	72476
#L3240HST-3	70785	~	73281	#L4740HSTCC3	70130	~	71275
#L3240DT-3	71003	~	73195	#L4740HST-3	70190	~	71221
#L3540HSTCC3	70219	~	72056	#L5040GST-3	70048	~	70145
#L3540HST-3	70281	~	71951	#L5240HSTCC3	71019	~	71213
#L3540GST-3	71372	~	71368	#L5240HST3	70437	~	71021
#L3940HSTCC3	70705	~	73147	#L5740HSTCC3	70324	~	73704
#L3940HST-3	70413	~	73113	#L5740HST3	70473	~	73649
#L3940DT-3	71001	~	71425	#M59TLB (HST)	51600	~	52660
#L4240HSTCC3	70270	~	72525	#L45TLB (HST)	50727	~	52407
#L4240HST-3	70337	~	72476				

Parts Information:

No.	PARTS NAME	PART No.	Q'ty	REMARKS
1	SPACER	TD35014720	1	For HST
2	SPACER	TD34014740	1	For DT/GST
3	O-RING	TA04082180	2	Shared by all models

Warranty Information:

Issue one warranty claim for each unit involved.

- In your "Warranty Claim Header", enter the usual information until you reach the Campaign number prompt and choose: **AG02215**
- Under the "reason for failure": Enter **FA07**
- Under the "key part number" Enter: **TD35014720 for HST or TD34014740 for DT/GST.**
- The warranty system will then automatically enter all of the warranty information for you.
- When finished, submit the claim to KCL.
- The claim will be approved overnight.

Labour Allowances	T1 - Install spacer & o-rings --- 0.2hr
Parts	Refer to Parts Information section above. When ordering parts for service bulletins, at the "Order Type" drop down menu select "Campaign - Service Bulletins".
Service Bulletin	AG022-15
Warranty Terms	Mandatory Field Campaign
Campaign Incentive Fee	\$75
Wash Code	Not required
Key part number	For HST models use TD35014720 For GST/DT models use TD34014740

SFI-A-15-020, SFI-A-15-042



[Output Shaft Spacer Instructions -FR-.pdf](#)