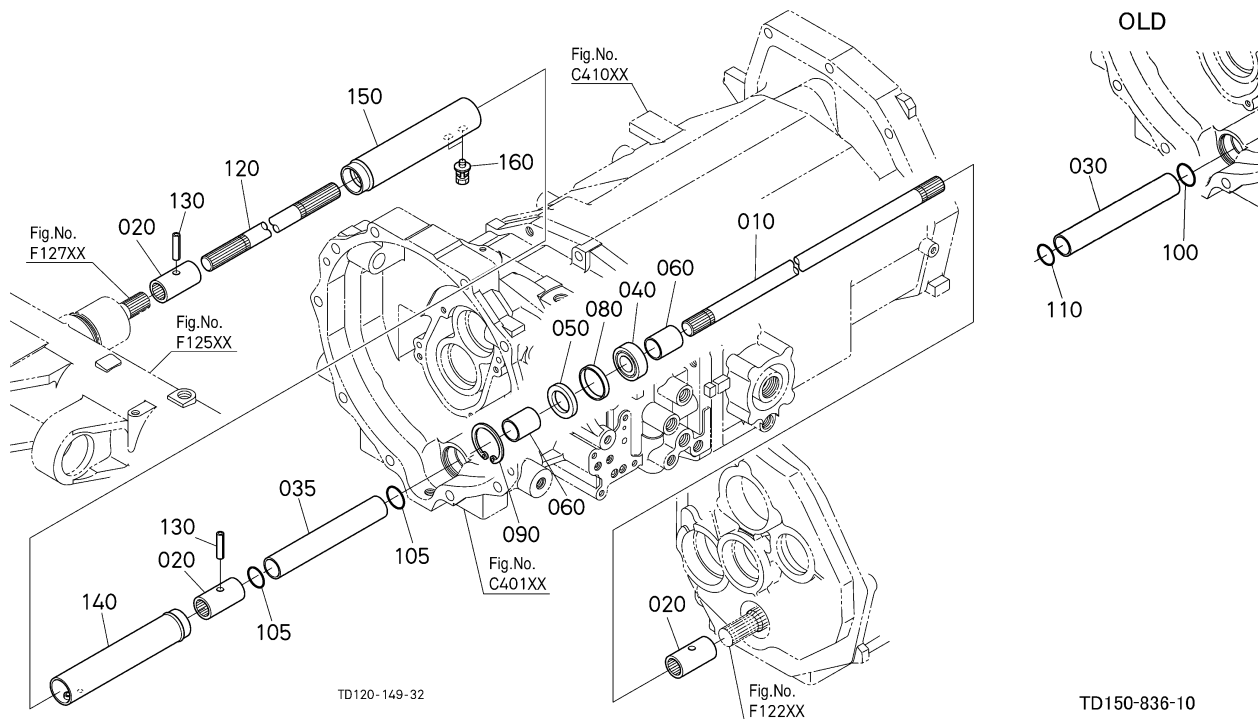


L3540HST -> FRONT AXLE/CHASSIS -> F12002 PROPELLER SHAFT ## L3540HST

Update Date: 11/12/2015, Printing Date: 09/11/2021



L3540HST -> FRONT AXLE/CHASSIS -> F12002 PROPELLER SHAFT ## L3540HST

Update Date: 11/12/2015, Printing Date: 09/11/2021

Interchangeable =, Not Interchangeable NI, New for Old >>, Old for New <<

No	Part Number	Part Name	Qty	RoundUp	IC	S/N	Remarks	Kg
010	TD060-14643	SHAFT,PROPELLER	1					5.5
020	T0070-14710	COUPLING	3					0.352
020	H3130-44520	COUPLING	3			>>		0.352
030	TD060-14722	SPACER(SHAFT,PROP.)	1			<=50926		0.561
030	TD060-14723	SPACER,PROPELLER S/F	1			>> >=50927		0.561
030	TD060-14723	SPACER,PROPELLER S/F	1			<=60191		0.561
035	TD350-14720	SPACER(PROPELLER S/F,FRONT)	1			>=60969		0.55
040	TD060-14590	BEARING,BALL	1					0.088
050	09500-28427	SEAL,OIL	1			<=50533		0.022
050	TC232-14670	SEAL,OIL	1		NI	>=50534		0.022
060	52600-15550	SLEEVE	1			<=50533		0.055
060	TC232-14680	SLEEVE	2			>> >=50534		0.055

L3540HST -> FRONT AXLE/CHASSIS -> F12002 PROPELLER SHAFT ##
L3540HST

Update Date: 11/12/2015, Printing Date: 09/11/2021

Interchangeable =, Not Interchangeable NI, New for Old >>, Old for New <<

No	Part Number	Part Name	Qty	RoundUp	IC	S/N	Remarks	Kg
080	TD060-14654	SPACER,PROPELLER SHAFT	1					0.022
090	04611-00420	CIR-CLIP,INTERNAL	1					0.0132
100	TA040-82180	O RING	1			<=60191		0.0022
105	TA040-82180	O RING	2			>=60969		0.0022
110	TA040-82180	O RING	1			<=60191		0.0022
120	TD030-14630	SHAFT,PROP.	1			<=60239		1.54
120	TD030-14632	SHAFT,PROPELLER	1		>>	>=60240		1.54
130	05411-00430	PIN SPRING	2					0.0044
140	TD030-14580	COVER(SHAFT,PROP.)	1					0.462
150	TA040-14574	COVER(SHAFT,PROP.)	1					0.726
160	TC050-14590	BOLT,WITH WASHER	2					0.0066