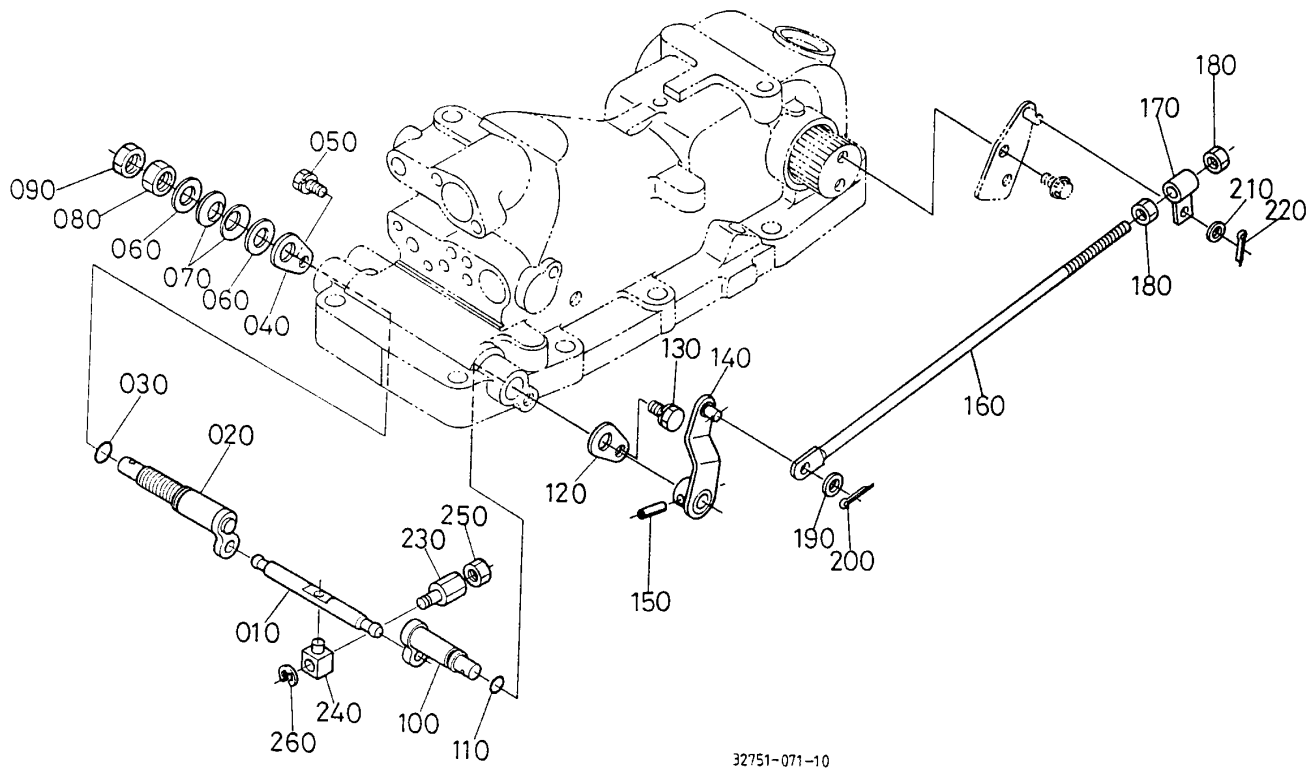


## L35 -&gt; HYDRAULIC SYSTEM -&gt; T10400 FEED BACK LEVER ## L35

Update Date: 08/17/2018, Printing Date: 12/28/2018



## L35 -&gt; HYDRAULIC SYSTEM -&gt; T10400 FEED BACK LEVER ## L35

Update Date: 08/17/2018, Printing Date: 12/28/2018

Interchangeable =, Not Interchangeable NI, New for Old &gt;&gt;, Old for New &lt;&lt;

No	Part Number	Part Name	Qty	RoundUp	IC	S/N	Remarks	Kg
010	31351-37640	LEVER,SPOOL DRIVE	1					0.11
020	31351-37650	ARM,CONTROL	1					0.352
030	04811-00140	O RING	1					0.0022
030	04816-00140	O RING	1		>>			0.0044
040	31351-37660	SET PLATE	1					0.022
050	01123-50816	BOLT,SEMS	1					0.0242
060	04013-50140	WASHER,PLAIN	2					0.022
070	34260-36880	WASHER,LOCK	2					0.0132
080	02174-50140	HEX.NUT	1					0.0308
090	02172-50140	HEX.NUT	1					0.022
100	31351-37750	SHAFT,BACK LEVER	1					0.22

## L35 -&gt; HYDRAULIC SYSTEM -&gt; T10400 FEED BACK LEVER ## L35

Update Date: 08/17/2018, Printing Date: 12/28/2018

Interchangeable =, Not Interchangeable NI, New for Old &gt;&gt;, Old for New &lt;&lt;

No	Part Number	Part Name	Qty	RoundUp	IC	S/N	Remarks	Kg
110	04811-00120	O RING	1					0.0022
110	04816-00120	O RING	1		>>			0.0022
120	38240-36890	SET PLATE	1					0.022
130	01123-50816	BOLT,SEMS	1					0.0242
140	31351-37760	LEVER,FEED BACK	1					0.176
150	05411-00525	PIN,SPRING	1					0.0044
160	31321-37770	ROD,FEED BACK	1					0.264
170	31351-37780	ROD,CONTROL	1					0.066
180	02114-50080	HEX.NUT	2					0.011
190	04013-50080	WASHER,PLAIN	1					0.0066
200	05511-50218	PIN,SPLIT	1					0.0022
210	04013-50080	WASHER,PLAIN	1					0.0066
220	05511-50215	PIN,SPLIT	1					0.0022
230	67531-38280	JOINT,SPOOL	1					0.0352
240	37150-36420	JOINT,SPOOL 2	1					0.044
250	02112-50080	HEX.NUT	1					0.0066
260	04613-00060	CIR-CLIP EXTERNAL	1					0.0