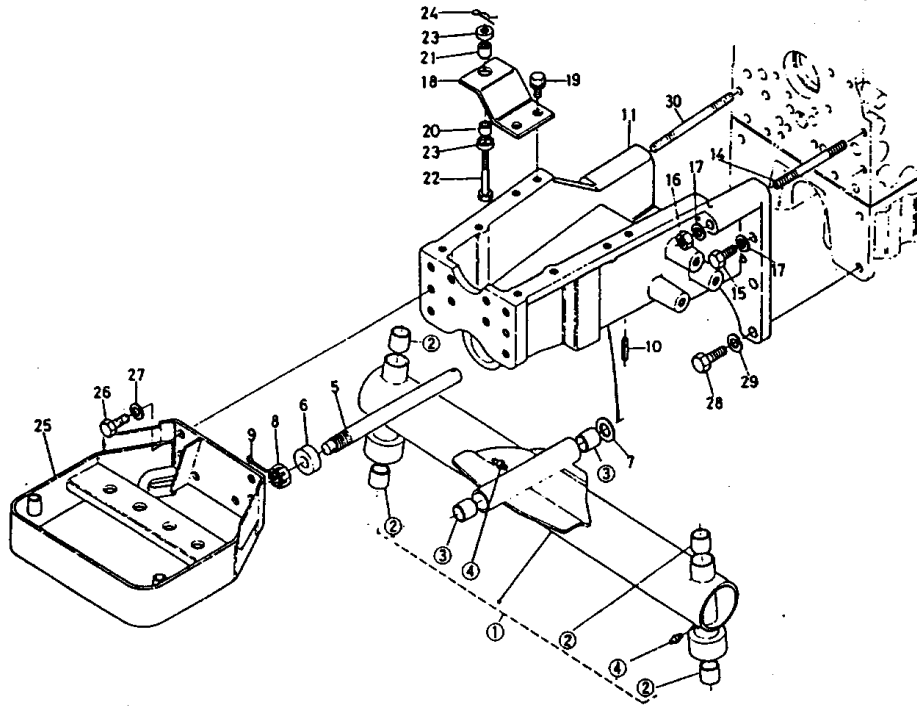
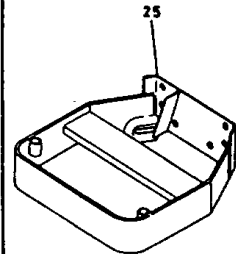


L185F -> FRONT AXLE AND FRONT WHEEL AND CHASSIS -> 022000 FRONT AXLE

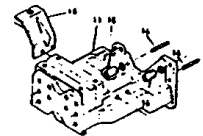
Update Date: 06/13/2012, Printing Date: 09/27/2012



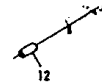
REF. No. 34210-13411 ~ 311675



REF. No. 35110-1365-0  
13 37150-1367-0  
13 37150-1366-0  
13 35110-1375-0



REF. No. 05012-01018



Discontinues.

No	Part Number	Part Name	Qty	IC	S/N	Remarks	lbs
001	34159-13110	AXLE FRONT	1				25,3
002	32120-14750	BUSH	4				0,0506
003	34150-13430	BUSH	2				0,0594
004	06613-10675	NIPPLE,GREASE	3				0,0066
005	37150-13410	PIN CENTER	1				1,353
006	37150-13460	COLLAR ADJUSTING	1				0,22
007	64135-35510	COLLAR	1				0,022
008	32210-13480	NUT ADJUSTING	1				0,2464
009	05511-50430	PIN,SPLIT	1				0,0088
010	05411-00840	PIN,SPRING	1				0,0176
011	35110-13650	BRACKET FRONT AXLE	1		ASK DEALER		28,27
011	35170-13650	BRACKET FRONT AXLE	1		ASK DEALER		0,0
011	35170-13652	BRACKET FRONT AXLE	1		ASK DEALER		0,0
011	35170-13654	BRACKET FRONT AXLE	1		ASK DEALER		37,18
012	05012-01018	PIN,STRAIGHT	2				0,0264
014	37150-13670	STUD	5		ASK DEALER		0,0616
014	34260-13640	STUD	2		ASK DEALER		0,1628
015	01173-51030	HEX.BOLT	1				0,0506
016	37150-13660	NUT	5		ASK DEALER		0,044
016	37300-14190	NUT	2		ASK DEALER		0,0198
017	04512-50100	WASHER,SPRING LOCK	5		ASK DEALER		0,0066
017	04512-50100	WASHER,SPRING LOCK	3		ASK DEALER		0,0066
018	35110-13750	SUPPORT RADIATOR	2		ASK DEALER		0,627
018	34150-13750	SUPPORT RADIATOR	2		ASK DEALER		0,44
019	01130-51020	BOLT	4				0,0
020	15111-72180	CUSHION	2				0,033
021	15111-72190	CUSHION	2				0,0352
022	15108-72380	BOLT	2				0,088

No	Part Number	Part Name	Qty	IC	S/N	Remarks	lbs
023	15111-72200	WASHER	4				0.0286
024	05515-51000	PIN SNAP	2				0.0044
025	34218-13810	BUMPER	1		ASK DEALER		11.0
025	35110-13810	BUMPER	1		ASK DEALER		12.76
025	35110-13810	BUMPER	1		ASK DEALER		12.76
026	01173-51230	HEX.BOLT	4				0.0814
027	04512-50120	LOCKWASHER M12	4				0.0066
028	01173-51235	HEX.BOLT	4				0.088
029	04512-50120	LOCKWASHER M12	4		ASK DEALER		0.0066
030	35260-13630	STUD	1		ASK DEALER		0.176