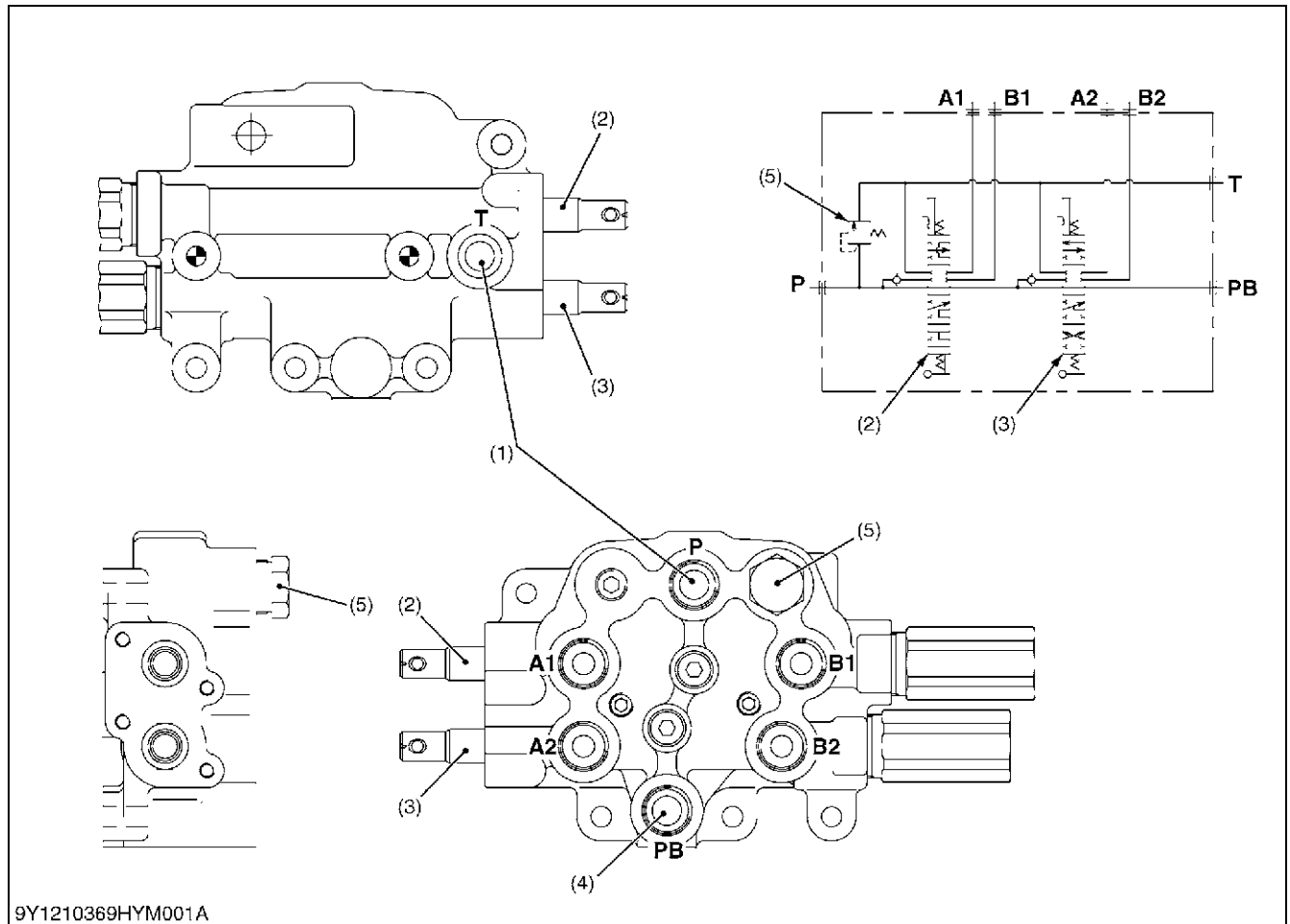


5. FRONT LOADER CONTROL VALVE ASSEMBLY

[1] STRUCTURE



- (1) Inlet and Outlet Section
- (2) Boom Control Valve
- (3) Bucket Control Valve
- (4) Power Beyond
- (5) Relief Valve

P: Pump Port
T: Tank Port

A1: A1 Port
A2: A2 Port

B1: B1 Port
B2: B2 Port
PB: Power Beyond Port

The control valve assembly consists of one casting block and four major section as shown above.

(1) Inlet and Outlet Section

This section has **P** and **T** ports.

The **P** port is connected to the **OUTLET** port of hydraulic pump by the hydraulic pipe.

The **T** port is connected to the **TANK** port of transmission case by the hydraulic pipe.

(2) Boom Control Section

The boom control valve is of 4-position, 6-connection, detent, spring center type, consisting of a mono block valve housing, spool, load check valve, etc. This valve has **A1** and **B1** ports and controls oil flow to the boom cylinder.

(3) Bucket Control Section

The bucket control valve is of 4-position, 6-connection, no detent, spring center type, consisting of a mono block valve housing, spool, load check valve, etc. This valve has **A2** and **B2** ports and controls oil flow to the bucket cylinder.

(4) Power Beyond

This section has **PB** port which is connected to the **INLET** port of hydraulic block by the hydraulic hose, and feeds oil to the three point hydraulic control valve.

9Y1210824HYM0016US0