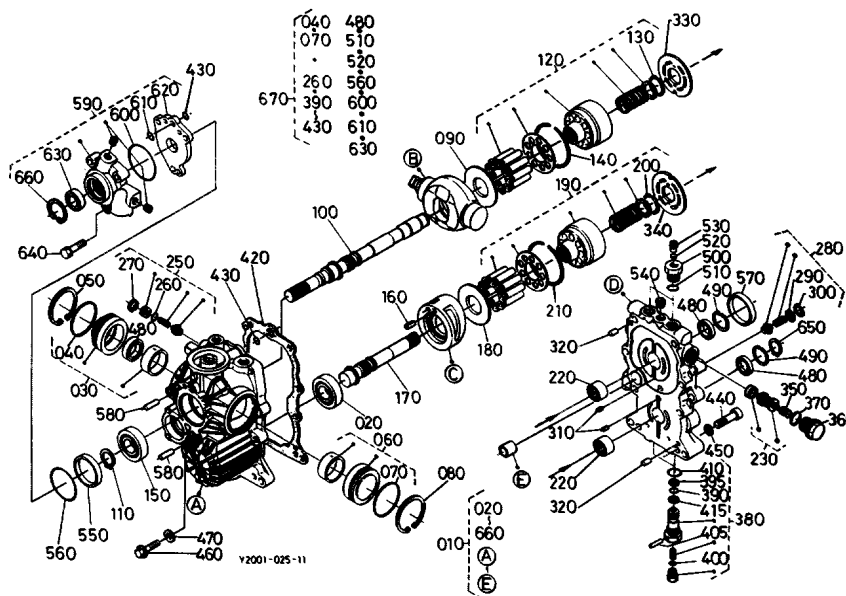


B7100HST-D NEW TYPE >=S/N60164 -> TRANSMISSION -> T43000 HST
[COMPONENT PARTS]% ## B7100HST-D NEW TYPE

Update Date: 09/10/2017, Printing Date: 07/15/2021



B7100HST-D NEW TYPE >=S/N60164 -> TRANSMISSION -> T43000 HST
[COMPONENT PARTS]% ## B7100HST-D NEW TYPE

Update Date: 09/10/2017, Printing Date: 07/15/2021

Interchangeable =, Not Interchangeable NI, New for Old >>, Old for New <<

No	Part Number	Part Name	Qty	RoundUp	IC	S/N	Remarks	Kg
010	66415-11600	ASSY HST	1					31.46
010	H6640-10600	ASSY,HST	1		>>			31.46
020	66415-39340	BEARING,BALL	1					0.11
030	66415-83300	ASSY COVER A	1					1.034
040	04811-50550	O RING	1					0.0044
050	04611-00620	CIR-CLIP,INTERNAL	1					0.0242
060	66415-83400	ASSY COVER B	1					1.034
070	04811-50550	O RING	1					0.0044
080	04611-00620	CIR-CLIP,INTERNAL	1					0.0242
090	66415-39150	PLATE THRUST	1					0.11
100	66415-39310	SHAFT(P)	1			<=65623		1.1
100	66415-39315	SHAFT(P)	1		NI	>=65624		1.65

**B7100HST-D NEW TYPE >=S/N60164 -> TRANSMISSION -> T43000 HST
[COMPONENT PARTS]% ## B7100HST-D NEW TYPE**

Update Date: 09/10/2017, Printing Date: 07/15/2021

Interchangeable =, Not Interchangeable NI, New for Old >>, Old for New <<

No	Part Number	Part Name	Qty	RoundUp	IC	S/N	Remarks	Kg
110	04612-00250	CIR-CLIP,EXTERNAL	1					0.0044
120	66415-83100	ASSY BLOCK CYL.(P)	1					2.486
130	66415-39470	CIR CLIP,INTERNAL	1					0.044
140	66415-39270	RING SNAP	1					0.044
150	66415-39340	BEARING,BALL	1					0.11
160	05012-00616	PIN	1			<=68002		0.0088
160	05411-00825	PIN,SPRING	1		NI	>=68003		0.0132
170	66415-39320	SHAFT(M)	1			<=68002		1.1
170	66415-39323	SHAFT(M)	1		NI	>=68003		0.924
180	66415-39150	PLATE THRUST	1					0.11
190	66415-83100	ASSY BLOCK CYL.(P)	1					2.486
200	66415-39470	CIR CLIP,INTERNAL	1					0.044
210	66415-39270	RING SNAP	1					0.044
220	66415-39750	BEARING NEEDLE	2					0.044
230	66415-83800	ASSY VALVE RELIEF	2			<=64107		0.132
230	66415-83802	ASSY VALVE RELIEF	2		NI	>=64108		0.066
240	04810-00050	RING	2			<=64107		0.0022
250	66415-83700	ASSY VALVE RELIEF	1					0.066
260	04810-00120	O RING	1					0.0022
270	04611-00170	CIR-CLIP,INTERNAL	1					0.0022
280	66415-84400	ASSY VALVE RELIEF	1					0.11
290	04013-50080	WASHER,PLAIN	1			<=63885		0.0066
290	66363-39740	WASHER	1		=	>=63886		0.0022
300	04611-00180	CIR-CLIP,INTERNAL	1					0.0022
310	05012-00414	PIN STRAIGHT	2			<=65847		0.0044
310	05411-00416	PIN,SPRING	2		=	>=65848		0.0022
320	05012-00612	PIN, STRAIGHT	2			<=64107		0.0066
320	05012-00610	PIN,STRAIGHT	2		=	>=64108		0.0066
330	66415-39910	PLATE VALVE(P)	1					0.066
340	66415-39920	PLATE VALVE(M)	1					0.044
350	66363-39520	SPRING	2					0.0022
360	66415-39590	PLUG	2					0.066
370	04811-00180	O RING	2					0.0022
380	66363-83600	ASSY VALVE NEUTRAL	2					0.22
390	04810-00120	O RING	2					0.0022
395	66363-39630	RING,BACK UP	2					0.0022

**B7100HST-D NEW TYPE >=S/N60164 -> TRANSMISSION -> T43000 HST
[COMPONENT PARTS]% ## B7100HST-D NEW TYPE**

Update Date: 09/10/2017, Printing Date: 07/15/2021

Interchangeable =, Not Interchangeable NI, New for Old >>, Old for New <<

No	Part Number	Part Name	Qty	RoundUp	IC	S/N	Remarks	Kg
400	04810-00100	O RING	2					0.0022
405	05411-00325	SPRING PIN	2					0.0022
410	04811-00180	O RING	2					0.0022
415	04013-50060	WASHER, PLAIN	2					0.0022
420	66415-39550	GASKET	1					0.022
430	04810-00100	O RING	2					0.0022
440	66415-39740	BOLT HEX-SOC-HD	8					0.0748
450	66415-39560	WASHER, SPRING	8					0.0066
460	01754-50835	BOLT, FLANGE	1			>=68003		0.0374
470	04714-00080	PACKING	1			>=68003		0.0022
480	66363-39560	SEAL, OIL	3					0.022
490	04611-00350	CIR-CLIP, INTERNAL	2					0.0066
500	66415-39520	PLUG	2					0.0726
510	04810-00140	O RING	2					0.0022
520	04714-00040	GASKET	2					0.0022
530	66415-39530	SCREW	2					0.011
540	15521-96030	PLUG	2					0.0154
550	66415-39540	COLLAR	1					0.055
560	04811-06530	O RING	1					0.0022
570	66415-39430	COLLAR	1					0.154
580	05012-00625	PIN, STRAIGHT	2			<=68002		0.0132
580	05012-00620	PIN, STRAIGHT	2		NI	>=68003		0.011
590	66415-83500	ASSY PUMP CHARGE	1					0.0
600	04811-06630	O RING	1					0.0022
610	04810-00120	O RING	1					0.0022
620	66415-39640	COVER CHARGE PUMP	1					0.11
630	66363-39560	SEAL, OIL	1					0.022
640	01123-50840	BOLT, SEMS	3					0.0396
650	04612-00200	CIR-CLIP, EXTERNAL	1					0.0022
660	04611-00350	CIR-CLIP, INTERNAL	1					0.0066
670	66415-84900	KIT SEAL	1					0.11
680	06311-25030	PLUG	1			<=68002		0.1122
690	04810-00140	O RING	1			<=68002		0.0022