

INSTRUCTION MANUAL

SFB-F50AH / SFB-F50BH / SFB-F50AUS ROPS

for KUBOTA TRACTOR B2650 / B3150 / B3150SU / B3350 / B3350SU

READ ALL INSTRUCTIONS BEFORE MOUNTING THE ROPS

■ Suitable Tractors

SFB-F50AH : B2650 TRACTOR (North America Model)

SFB-F50BH : B3350 / B3350SU TRACTOR (North America Models)

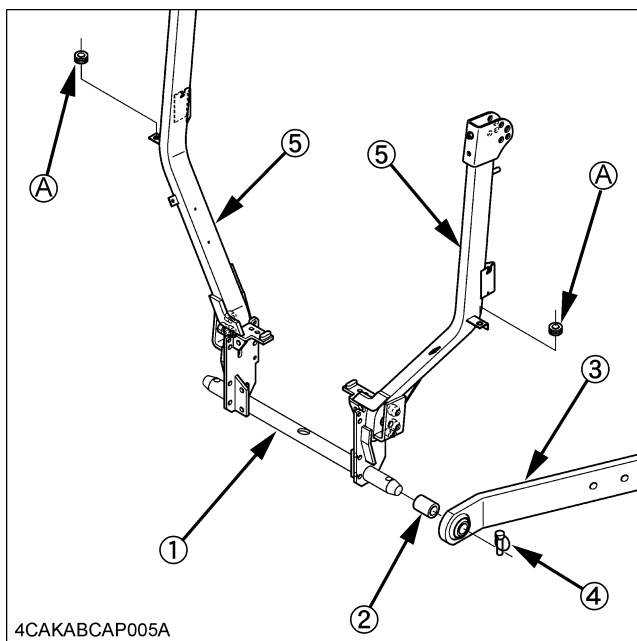
SFB-F50AUS : B3150 / B3150SU TRACTOR (Oceania Models)

■ Installation Instructions

NOTE :

- The parts (A to H) are reused.

1. Remove the lower link and the collar from the lower link pin.
2. Insert the rubber cushion (A) into the hole of the lower frame LH (010) and RH (040).



- (1) Lower link pin
 (2) Collar
 (3) Lower link
 (4) Set pin
 (5) Lower frame / Parts List No. (010), (040)

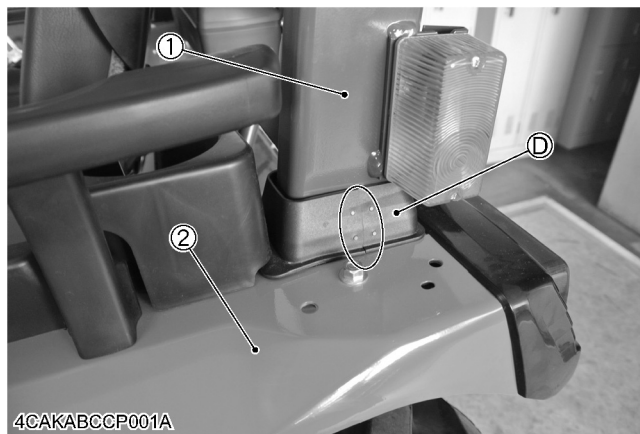
3. Insert the lower frame LH (010) onto the lower link pin and slightly tighten it using the 4 bolts (M12 x 35) (070) and the 2 bolts (M12 x 40) (075) on the diff. gear case and rear hitch.
4. Insert the lower frame RH (040) onto the lower link pin and slightly tighten it using the 4 bolts (M12 x 35) (070) and the 2 bolts (M12 x 40) (075) on the diff. gear case and rear hitch.
5. Install the connector plate (140) and slightly tighten it using the 4 sems bolts (150).
6. Install the lower frame LH and RH in the fenders and tighten them using the 2 M8 flange bolts (B), 2 rubber cushions (A) and 2 nuts (C).

NOTE :

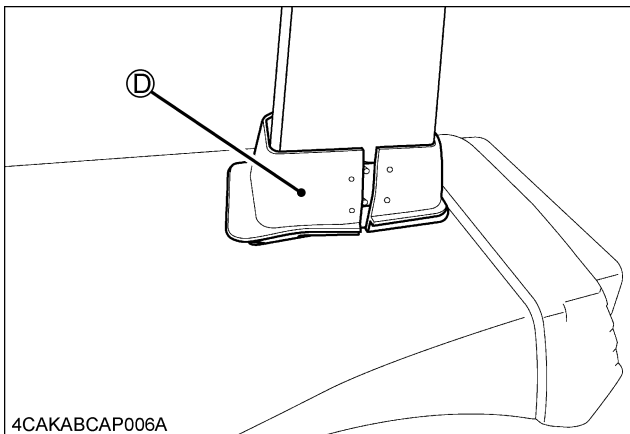
- Be sure the bolts are installed as shown in the Parts List.

7. Insert the ROPS cover (D) onto the ROPS frame.

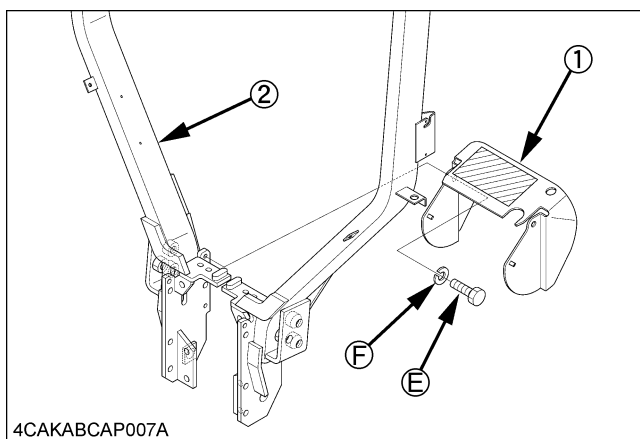
Be sure the cutting face (circle portion) of the ROPS cover is towards the outside of the tractor as shown below.



- (1) Lower frame
(2) Fender



8. Install the upper frame (080) to the lower frame LH and RH (010 and 040).
9. Apply the set plate (I) to the hex. bolt (110), and temporarily tighten the hex. bolt (110) and locking nut (120) to secure the upper frame (080) and the lower frame LH and RH (010 and 040). Then Apply the ROPS pin spring (160) to the set pin (100), insert the set pin (100) and secure it with the hair pin.
10. Tighten the locking nut (120) in the following procedure. Hold the upper frame (080) at the horizontal position. Adjust the locking nut (120) so that the upper frame (080) can be smoothly moved by hand. Also release your hand to make sure the frame will never drop from the horizontal position.
11. Tighten the upper side bolts (070) of the lower frame LH and RH on the diff. gear case.
12. Completely tighten all the bolts and nuts used to mount the ROPS according to the following torque table.
13. Attach the PTO cover inside of the ROPS frame and tighten it using the 2 bolts (M8 x 20) (E) and spring lock washers (F).



- (1) PTO cover
(2) ROPS frame

14. Attach the 3-point hitch and side turn signal/hazard light according to the assembly instructions of tractor.
15. To prevent free fall of the ROPS upper frame (080) when pivoting it by hand, increase the torque of the hex. bolt (LH and RH) locking nuts (120).



CAUTION

To avoid personal injury:

- Adjust free fall after confirming that no bystanders are nearby.
- Sudden movement may occur as a result of improper adjustment.

■ Tightening Torque

BOLT	REF. No.	REQUIRED TORQUE
M8 BOLT, NUT	(B), (C)	9.81 to 11.2 N-m (1.0 to 1.15 kgf-m, 7.2 to 8.3 ft-lbs)
M10 GRADE 7 BOLT	(150)	49.0 to 57.0 N-m (5.0 to 5.8 kgf-m, 36.1 to 42.0 ft-lbs)
M12 GRADE 7 BOLT	(070), (075)	88.3 to 93.2 N-m (9.0 to 9.5 kgf-m, 65.1 to 68.7 ft-lbs)

◆ Attaching the seat belt assy (Replace kit only)

[B2650 / B3150 / B3350]

1. Attach the seat belt assy (170) to the seat belt brackets LH and RH (200 and 210) with the W sems bolts (190).
2. Attach the seat belt brackets LH and RH (200 and 210) to the seat adjuster [1] with the nuts (G).

[B3150SU / B3350SU]

1. Attach the seat belt assy (170) to the seat belt brackets LH and RH (200 and 210) with the W sems bolts (190).
2. Attach the seat belt brackets LH and RH (200 and 210) to the rear seat stay [2] with the nuts (H).

- Tightening torque (Seat belt)

BOLT	REF. No.	REQUIRED TORQUE
M10 BOLT	(190)	49.0 to 57.0 N-m (5.0 to 5.8 kgf-m, 36.1 to 42.0 ft-lbs)
M10 NUT	(G)	49.0 to 57.0 N-m (5.0 to 5.8 kgf-m, 36.1 to 42.0 ft-lbs)
M8 BOLT	(H)	24.0 to 28.0 N-m (2.4 to 2.9 kgf-m, 17.7 to 20.7 ft-lbs)

NOTE :

- See the Parts List for installation instructions.

◆ Applying French labels

Remove English labels and apply French labels (030, 060, 230 and 250) in specified position if necessary. (See the Parts List.)

[Procedures for Applying the Labels]

1. Peel off labels.
2. Wipe off dust or oil on labels affixing surface sufficiently.
3. Mount new labels by pressing any bubbles to outside edge.

NOTE :

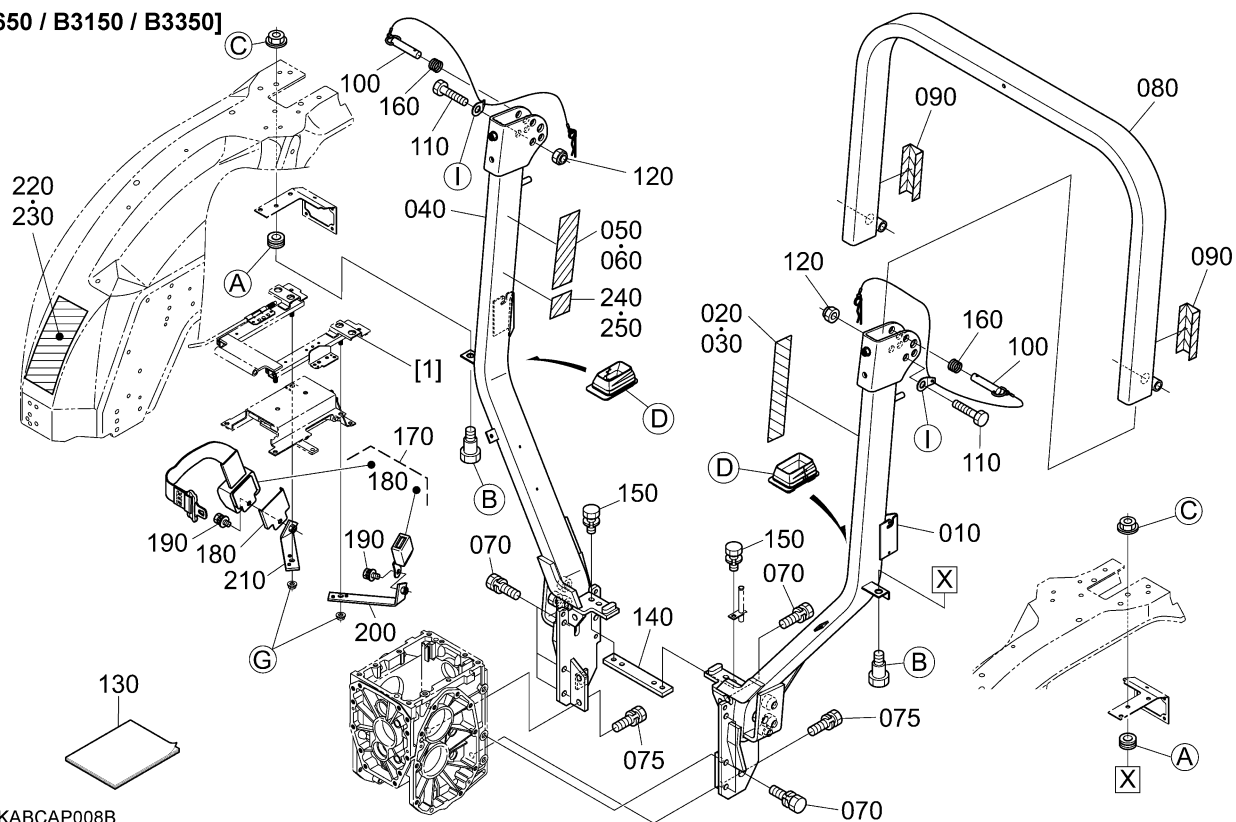
- For the mounting locations, refer to "SAFE OPERATION" in the operator's manual or Parts List.

[Precautions in Applying the Labels]

1. Do not touch the applying surfaces directly with your hands.
2. Do not wear cotton work gloves in applying the labels. If unavoidable, choose clean ones that are nearly free of lint.

Parts List

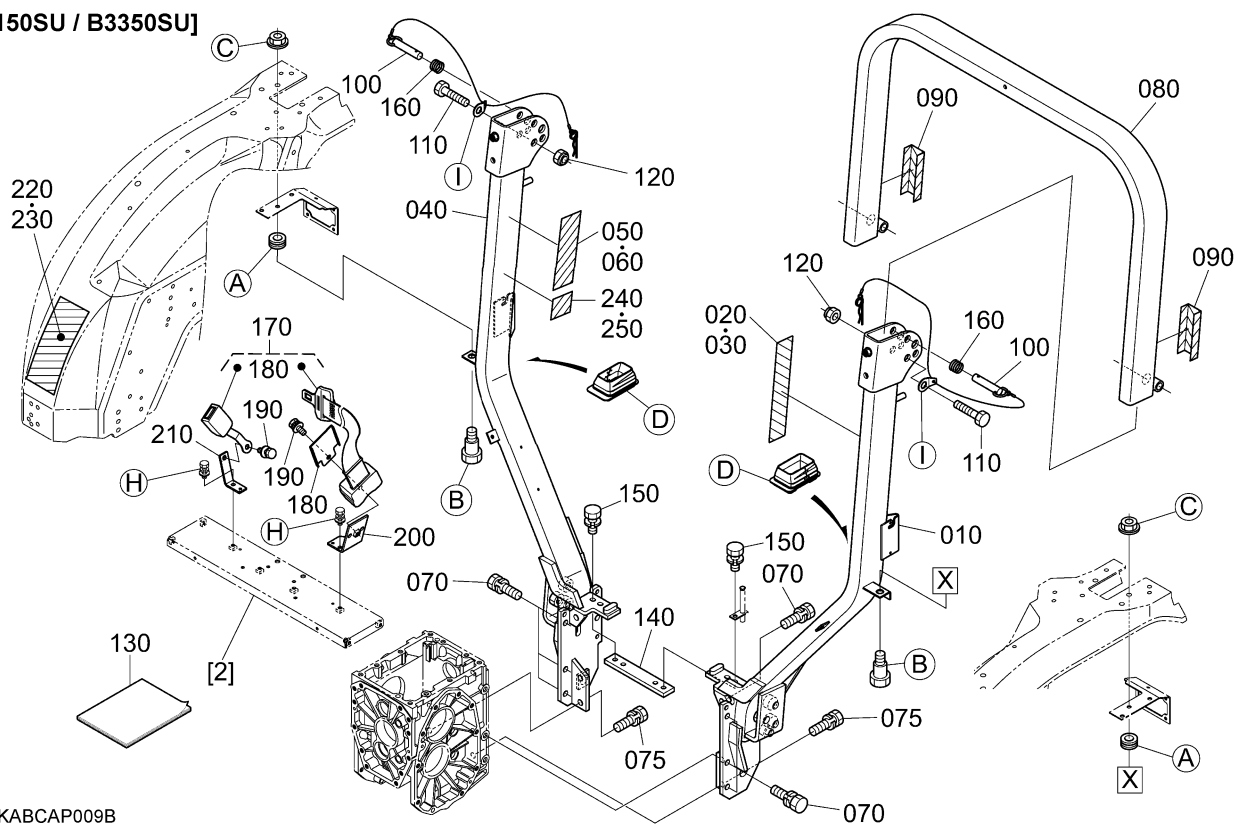
[B2650 / B3150 / B3350]



4CAKABCAP008B

*The parts (020 and 030) are not applied to the B2650 / B3150 tractor.

[B3150SU / B3350SU]



4CAKABCAP009B

*The parts (020 and 030) are not applied to the B3150SU tractor.

REF. No.	PART No.	PART NAME	Q'TY			REMARKS
			SFB-F50AH	SFB-F50BH	SFB-F50AUS	
010	----	FRAME (LOWER LH)	1	1	1	N/A FOR SERVICE
020	6C410-4745-0	LABEL	-	1	-	ENGLISH
030	6C411-4745-0	LABEL	-	1	-	FRENCH
040	----	FRAME (LOWER RH)	1	1	1	N/A FOR SERVICE
050	3A111-9554-0	LABEL, FLDNG ROPS CAUTION	1	1	1	ENGLISH
060	3A112-9554-0	LABEL, ROPS CAUTION	1	1	-	FRENCH
070	01123-51235	BOLT	8	8	8	7T
075	01123-51240	BOLT	4	4	4	7T
080	----	FRAME, UPPER	1	1	1	N/A FOR SERVICE
090	6C140-5499-0	REFLECTOR (LABEL)	2	2	2	
100	6C300-8745-0	SET, BOLT ROPS	2	2	2	
110	01176-51675	HEX. BOLT	2	2	2	9T
120	02574-50160	NUT, LOCKING	2	2	2	6T
130	6C410-8959-0	MANUAL, INSTRUCTION	1	1	1	This paper
140	----	PLATE (CONNECTOR)	1	1	1	N/A FOR SERVICE
150	01133-51025	BOLT, SEMS	4	4	4	7T
160	6C360-8755-0	SPRING, ROPS PIN	2	2	2	
170	K2771-5685-2	BELT, SEAT, ASSY	1	1	1	(Replace kit only)
180	K3181-5687-0	COVER (BELT SEAT)	1	1	1	(Replace kit only)
190	01135-51025	BOLT, W SEMS	2	2	2	7T (Replace kit only)
200	TC030-1849-2	BRACKET, SEAT BELT LH	1	-	-	(Replace kit only)
200	TC030-1849-2	BRACKET, SEAT BELT LH	-	1	1	[B3150 / B3350] Replace kit only)
200	6C070-5276-3	STAY, SEAT BELT LH	-	1	1	[B3150SU / B3350SU] (Replace kit only)
210	TA040-1848-2	BRACKET, SEAT BELT RH	1	-	-	(Replace kit only)
210	TA040-1848-2	BRACKET, SEAT BELT RH	-	1	1	[B3150 / B3350] (Replace kit only)
210	6C040-5277-0	STAY, SEAT BELT RH	-	1	1	[B3150SU / B3350SU] (Replace kit only)
220	TA240-9848-2	LABEL, ROPS WARNING	1	1	1	ENGLISH
230	TC420-9848-2	LABEL, ROPS WARNING	1	1	-	FRENCH
240	6C830-4747-0	LABEL (SILICA, WARNING)	1	1	1	ENGLISH
250	6C831-4747-0	LABEL (SILICA, WARNING, FR)	1	1	-	FRENCH

SFB-F50AH : B2650 TRACTOR

SFB-F50BH : B3350, B3350SU TRACTOR

SFB-F50AUS : B3150, B3150SU TRACTOR