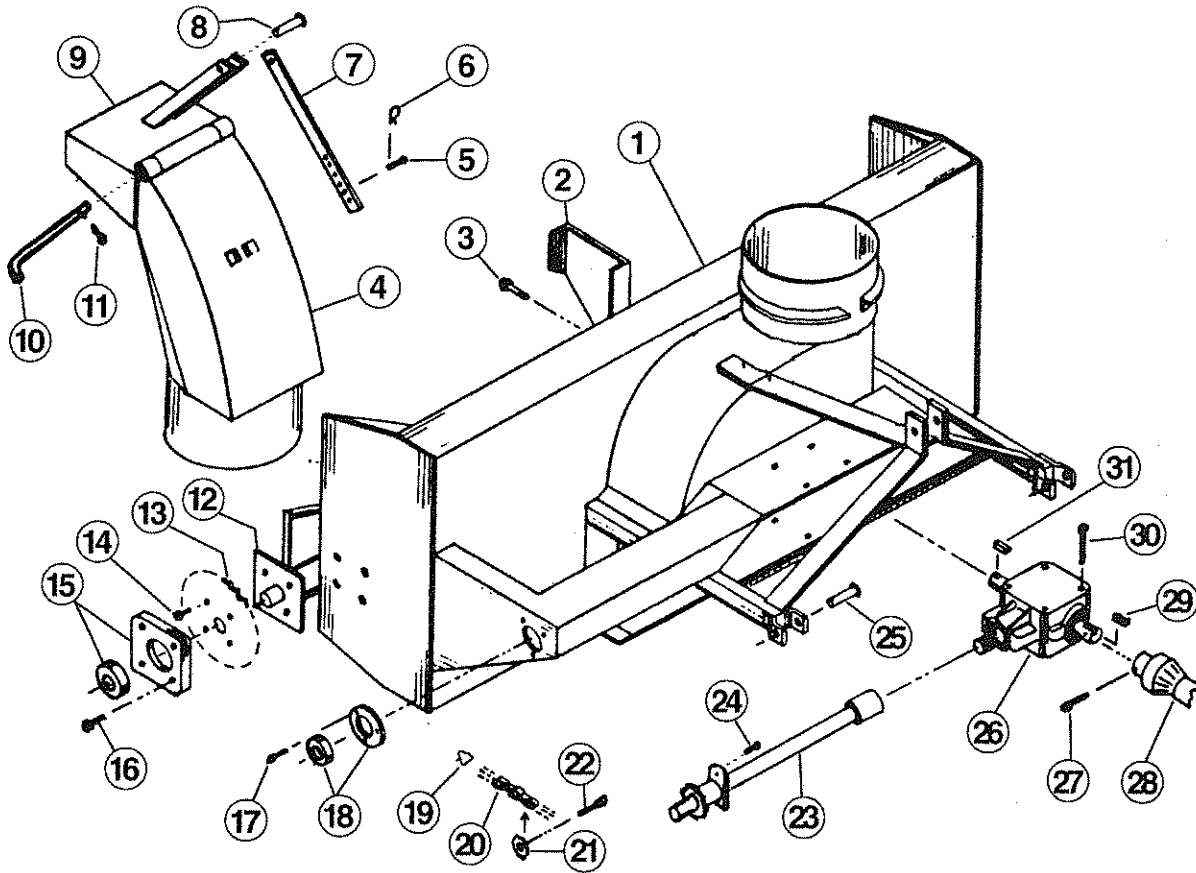


# AGRO TREND SNOWBLOWER MANUAL



Item	Part Number	Description	Snowblower Model			
			C42	C48	C54	C60
1	4001 - 01	Mainframe	1			
	4001 - 04			1		
	4001 - 07				1	
	4001 - 10					1
2	4015 - 10	Fan	1	1	1	1
3	O.L.	Hex Bolt 1/4 x 1 & F.W.	1	1	1	1
4	4020 - 10	Chute (W/O Deflector)	1	1	1	1
5	O.L.	Clevis Pin 5/16 x 1-3/4	1	1	1	1
6	O.L.	Hairpin 3/32 x 2-1/4	1	1	1	1
7	4020 - 12	Adjusting Arm	1	1	1	1
8	O.L.	Hex Bolt 5/16 x 1-1/2 & Locknut	1	1	1	1
9	4020 - 11	Deflector	1	1	1	1

## AGRO TREND SNOWBLOWER MANUAL

Item	Part Number	Description	Snowblower Model			
			C42	C48	C54	C60
10	4020 - 13	Deflector Hinge Pin	1	1	1	1
11	O.L.	Cotter Pin 1/8 x 1	1	1	1	1
12	4005 - 01	Auger	1			
	4005 - 04			1		
	4005 - 07				1	
	4005 - 10					1
13	5401 - 0601	Auger Drive Sprocket	1	1	1	1
14	O.L.	Hex Bolt 3/8 x 1-1/4 & L.W. & Nut	4	4	4	4
15	5415 - 0205	Bearing 1" Cast Flange	2	2	2	2
16	O.L.	Hex Bolt 7/16 x 1-1/2 & L.W. & Nut	8	8	8	8
17	O.L.	Hex Bolt 5/16 x 1 & L.W. & Nut	3	3	3	3
18	5415 - 1205	Bearing 1" Flangette	1	1	1	1
19	O.L.	Connector Link #50	1	1	1	1
20	O.L.	Roller Chain #50 (50")	1	1	1	1
21	5401 - 0401	Idler Sprocket	1	1	1	1
22	4040 - 10	Idler Bolt Assembly	1	1	1	1
23	4010 - 01	Cross Shaft	1			
	4010 - 04			1		
	4010 - 07				1	
	4010 - 10					1
24	O.L.	Hex Bolt GR.2 1/4 x 1 & L.W. & Nut	1	1	1	1
25	4025 - 10	Hitch Pin	2	2	2	2
26	5401 - 0101	Gearbox	1	1	1	1
27	O.L.	Hex Bolt 1/4 x 2-1/2 & L.W. & Nut	1	1	1	1
28	5401 - 0201	PTO Shaft	1	1	1	1
29	7002-0201-06	Keystock 1/4 sq. x 1-1/2	1	1	1	1
30	O.L.	Hex Bolt 3/8 x 5 & L.W. & Nut	4	4	4	4
31	7002 - 0201 - 8	Keystock 1/4 sq. x 2	1	1	1	1
32	5450 - 000509	Shearpin 6mm x 40mm GR5	1	1	1	1