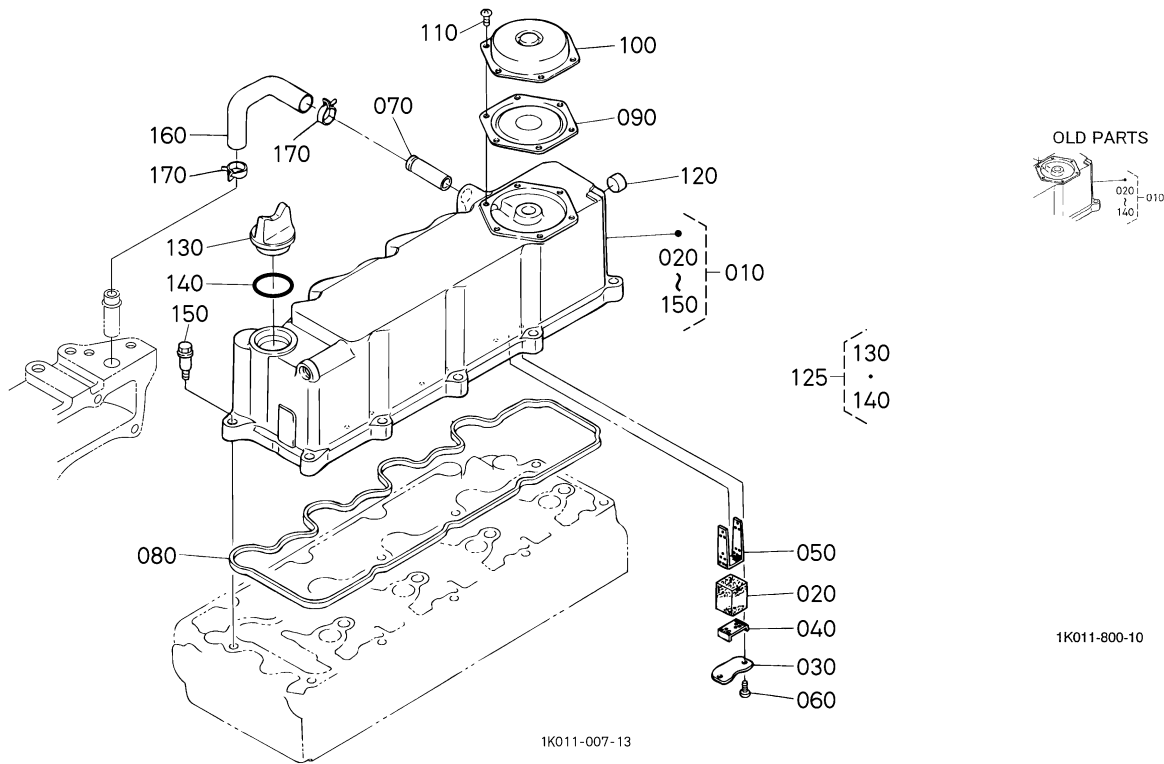


M6800SDT-CAB -> ENGINE -> 000500 HEAD COVER ## M6800SDT-CAB

Update Date: 10/16/2015, Printing Date: 05/17/2017



M6800SDT-CAB -> ENGINE -> 000500 HEAD COVER ## M6800SDT-CAB

Update Date: 10/16/2015, Printing Date: 05/17/2017

Interchangeable =, Not Interchangeable NI, New for Old >>, Old for New <<

No	Part Number	Part Name	Qty	RoundUp	IC	S/N	Remarks	Kg
010	1C010-14500	ASSY COVER,CYL.HEAD	1			<=3U2804		4.356
010	1C010-14505	ASSY COVER CYL.HEAD	1		>>	>=3W0001		4.356
020	1C010-05670	ELEMENT(BREATHER)	3					0.0154
030	1C010-05370	SHIELD,OIL BREATHER	3					0.0066
040	1C010-05140	PLATE(B/THER ELEMENT)	3					0.0022
050	1C010-05150	PLATE(B/THER ELEMENT)	3					0.0088
060	03054-50408	SCREW,PAN HEAD(PHILLIPS)	6					0.0022
070	16241-05550	JOINT,BREATHER PIPE	1					0.044
080	1C010-14520	GASKET,HEAD COVER	1					0.11
090	1C010-05200	COMP.VALVE,BREATHER	1					0.0286
100	1C010-05120	COVER,BREATHER	1					0.099

M6800SDT-CAB -> ENGINE -> 000500 HEAD COVER ## M6800SDT-CAB

Update Date: 10/16/2015, Printing Date: 05/17/2017

Interchangeable =, Not Interchangeable NI, New for Old >>, Old for New <<

No	Part Number	Part Name	Qty	RoundUp	IC	S/N	Remarks	Kg
110	03054-50508	SCREW,PAN HEAD(PHILLIPS)	6					0.0044
120	06311-85016	CAP,SEALING	2					0.0066
125	1C010-33080	ASSY PLUG,O/FILLER	1					0.0396
130	15852-33140	PLUG,OIL FILLER	1					0.0836
130	E9151-33140	PLUG(OIL FILLER)	1		=			0.0374
140	04811-50300	O RING	1					0.0022
140	04817-50300	O RING	1		>>			0.0022
150	1C010-91020	BOLT	10					0.0374
160	1C010-05510	TUBE BREATHER	1					0.0352
170	16241-33510	BAND,PIPE	2					0.011