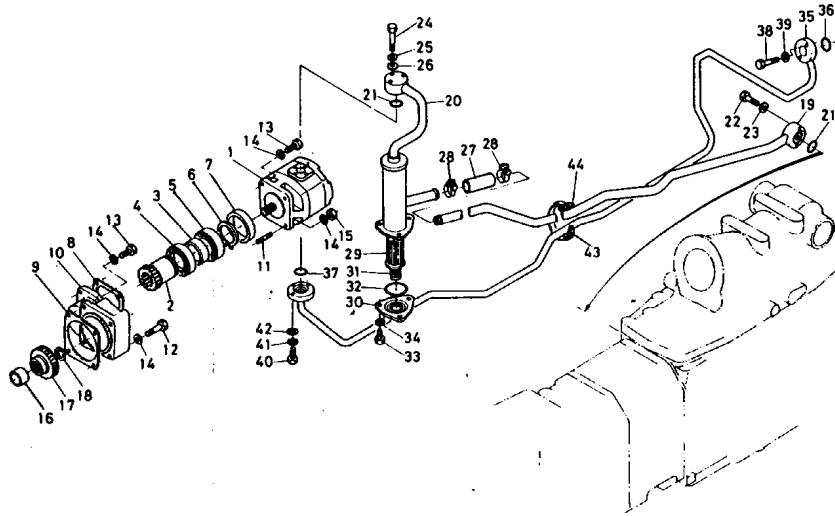


L345DT -> HYDRAULIC SYSTEM -> 510000 OIL PRESSURE 1 ## L345DT

Update Date: 06/13/2012, Printing Date: 07/30/2017



L345DT -> HYDRAULIC SYSTEM -> 510000 OIL PRESSURE 1 ## L345DT

Update Date: 06/13/2012, Printing Date: 07/30/2017

Interchangeable =, Not Interchangeable NI, New for Old >>, Old for New <<

No	Part Number	Part Name	Qty	RoundUp	IC	S/N	Remarks	Kg
001	35340-36100	PUMP OIL PRESSURE	1					6.6
002	37810-37830	GEAR SPUR 23	1					0.5236
003	37300-37770	RACE INNER	1					0.154
004	37300-37780	BEARING NEEDLE	1					0.242
005	08101-06907	BEARING BALL	1					0.1606
006	04612-00350	CIR-CLIP,EXTERNAL	1					0.022
007	37300-37790	COLLAR	1					0.055
008	34150-37870	GASKET	1					0.0
009	34150-37860	GASKET	1					0.0
010	37300-37850	HOLDER O/P PUMP	1					3.003
011	01513-50820	BOLT,STUD	2					0.044

L345DT -> HYDRAULIC SYSTEM -> 510000 OIL PRESSURE 1 ## L345DT

Update Date: 06/13/2012, Printing Date: 07/30/2017

Interchangeable =, Not Interchangeable NI, New for Old >>, Old for New <<

No	Part Number	Part Name	Qty	RoundUp	IC	S/N	Remarks	Kg
012	01153-50845	HEX.BOLT	2					0.0396
013	01153-50822	HEX.BOLT	4					0.0242
014	04512-50080	WASHER,SPRING LOCK	8					0.0044
015	02156-50080	HEX.NUT	2					0.0088
016	34150-37820	COLLAR	1					0.11
017	37300-37810	GEAR SPUR	1					0.715
018	04612-00250	CIR-CLIP,EXTERNAL	1					0.0044
019	35340-38110	PIPE INLET	1					3.41
020	37810-38123	ASSY CASE FILTER	1					2.343
021	04811-00200	O RING	2					0.0022
022	01153-50850	M8-1.25xM50	2					0.044
023	04512-50080	WASHER,SPRING LOCK	2					0.0044
024	01053-50642	BOLT	3					0.0242
025	04512-50060	WASHER,SPRING LOCK	3					0.0022
026	04013-50060	WASHER, PLAIN	3					0.0022
027	34350-37770	PIPE RUBBER	1					0.0
028	34350-37780	CLAMP	2					0.044
029	37300-37710	FILTER OIL	1					0.319
030	34350-37742	COVER FILTER	1					0.7018
031	37300-37740	SPRING	1					0.011
032	04811-50600	RING	1					0.0044
033	01153-50820	HEX.BOLT	3					0.0264
034	04512-50080	WASHER,SPRING LOCK	3					0.0044
035	35340-38210	ASSY PIPE DELIVERY	1					2.42
036	04810-00120	O RING	1					0.0022
037	04810-00200	O RING	1					0.0022
038	01153-50830	HEX.BOLT	1					0.0286
039	04512-50080	WASHER,SPRING LOCK	2					0.0044
040	01053-50625	BOLT	3					0.0154
041	04512-50060	WASHER,SPRING LOCK	3					0.0022
042	04013-50060	WASHER, PLAIN	3					0.0022

L345DT -> HYDRAULIC SYSTEM -> 510000 OIL PRESSURE 1 ## L345DT

Update Date: 06/13/2012, Printing Date: 07/30/2017

Interchangeable =, Not Interchangeable NI, New for Old >>, Old for New <<

No	Part Number	Part Name	Qty	RoundUp	IC	S/N	Remarks	Kg
043	33251-82760	BAND PIPE	2					0.0352
044	33430-82760	PIN(BAND)	2					0.0088