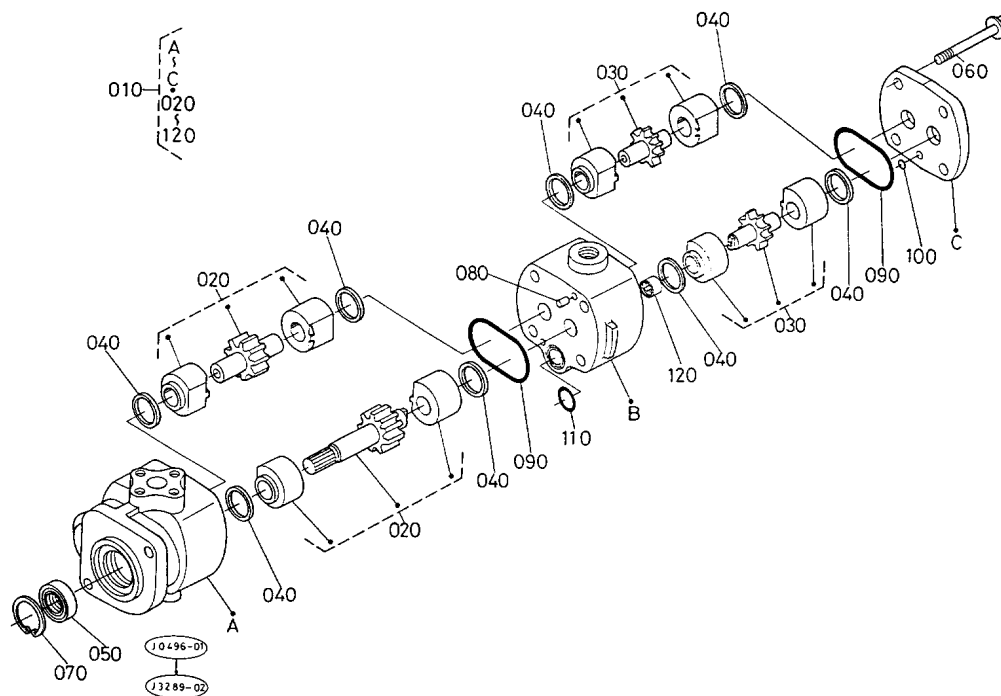


# L2950DT -> HYDRAULIC SYSTEM -> T09702 HYDRAULIC PUMP (PS) [COMPONENT PARTS] ## L2950DT

Update Date: 09/10/2017, Printing Date: 11/18/2017



## L2950DT -> HYDRAULIC SYSTEM -> T09702 HYDRAULIC PUMP (PS) [COMPONENT PARTS] ## L2950DT

Update Date: 09/10/2017, Printing Date: 11/18/2017

Interchangeable =, Not Interchangeable NI, New for Old >>, Old for New <<

No	Part Number	Part Name	Qty	RoundUp	IC	S/N	Remarks	Kg
010	35060-76100	ASSY PUMP HYDRAULIC	1				W/O WET CLUTCH	6.6
010	31391-76103	ASSY PUMP HYDRALIC	1			<=50198	WITH WET CLUTCH	7.018
010	35070-76100	ASSY PUMP HYDRAULIC	1		NI	>=50199	WITH WET CLUTCH	6.6
020	31351-76402	GEAR,COMP(HYD.PUMP)	1				W/O WET CLUTCH	1.1
020	31391-76302	COMP.GEAR HYD.PUMP	1				WITH WET CLUTCH	1.122
030	35080-76500	GEAR,COMP(HYD.PUMP)	1				W/O WET CLUTCH	0.638

## L2950DT -&gt; HYDRAULIC SYSTEM -&gt; T09702 HYDRAULIC PUMP (PS)

## [COMPONENT PARTS] ## L2950DT

Update Date: 09/10/2017, Printing Date: 11/18/2017

Interchangeable =, Not Interchangeable NI, New for Old &gt;&gt;, Old for New &lt;&lt;

No	Part Number	Part Name	Qty	RoundUp	IC	S/N	Remarks	Kg
030	31391-76502	COMP.GEAR HYD.PUMP	1			<=50198	WITH WET CLUTCH	0.638
030	35080-76500	GEAR,COMP(HYD.PUMP)	1		NI	>=50199	WITH WET CLUTCH	0.638
040	38180-76172	SQUARE RING	8					0.0044
050	31381-76390	SEAL,OIL	1					0.022
060	31391-76480	BOLT FLANGE	4			<=50198		0.143
060	01754-51090	BOLT,FLANGE	4		=	>=50199		0.077
070	04611-00300	CIR-CLIP,INTERNAL	1					0.0088
080	05012-00612	PIN, STRAIGHT	2					0.0066
090	04810-50550	RING	2					0.0044
100	04810-00050	RING	1					0.0022
110	04810-00180	O RING	1					0.0022
120	37410-76470	COUPLING	1					0.022