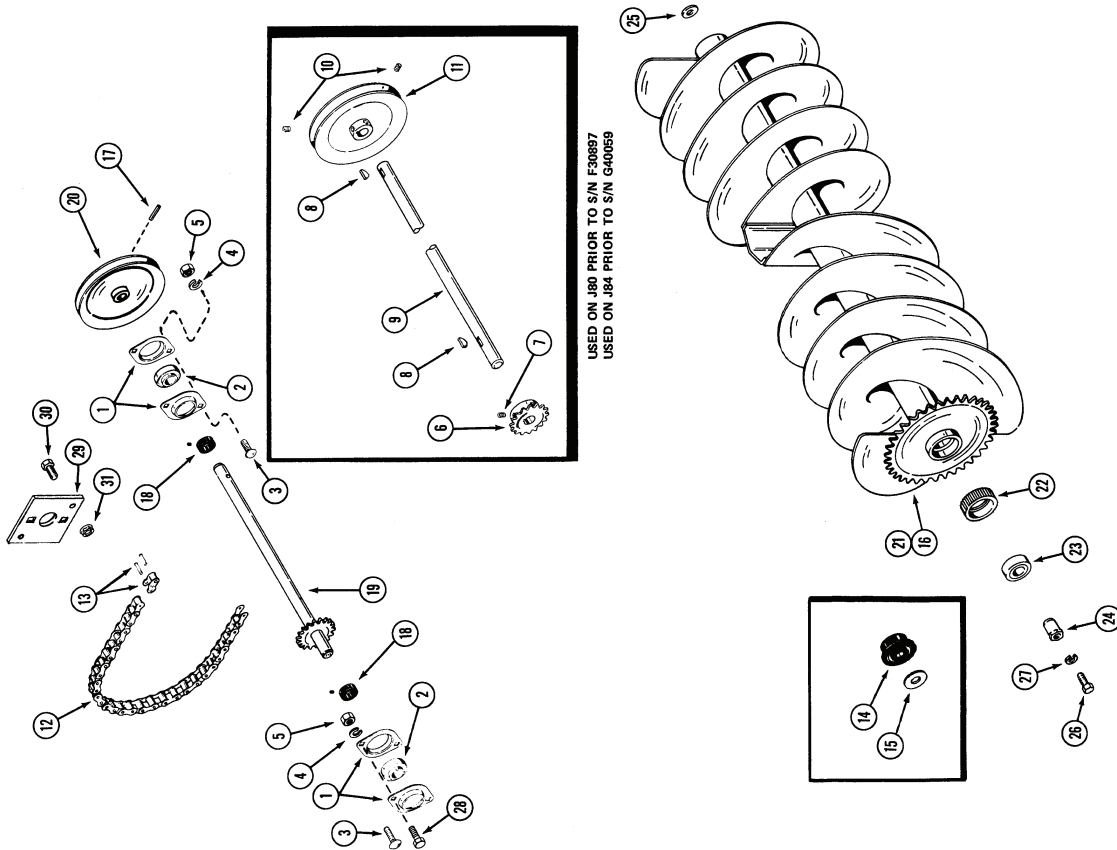


AUGER AND DRIVE ASSEMBLY



AUGER AND DRIVE ASSEMBLY

REF.	PART NO.	DESCRIPTION	REQ'D
1	C15514	FLANGETTE - (J, K, L80 before S/N R11815 - J, K, L84 before S/N S13196)	4
1	C28277	FLANGETTE - (L, M, N, P, R, S80 S/N R11815 - L, M, N, P, R, S84 S/N S13196 and after)	4
2	C28817	BEARING - (L, M, N, P, R, S80 S/N R11815 - L, M, N, P, R, S84 S/N S13196 and after)	2
2	C14419	BEARING - shaft (includes item 18) (J, K, L80 before S/N R11815 - J, K, L84 before S/N S13196)	2
3	111-132	BOLT - 5/16" x 3/4" NC round head, square neck, ZP	2
4	192-20	LOCK WASHER - 5/16" ZP (early production)	UAR
5	131-911	NUT - 5/16" NC hex ZP flange	4
6	C14579	SPROCKET - drive, 16 tooth (J80, used prior to S/N F30897)	1
6	C14579	SPROCKET - drive, 16 tooth (J84, used prior to S/N G40059)	1
7	178-858	SETSCREW - 5/16" x 3/8" (J80, used prior to S/N F30897)	2
7	178-858	SETSCREW - 5/16" x 3/8" (J84, used prior to S/N G40059)	2
8	126-16	KEY - woodruff #9 (J80, used prior to S/N F30897)	2
8	126-16	KEY - woodruff #9 (J84, used prior to S/N G40059)	2
9	C17724	SHAFT - drive (J84, used prior to S/N G40059)	1
9	C17723	SHAFT - drive (J80, used prior to S/N F30897)	1
10	178-858	SETSCREW - 5/16" x 3/8" (J80, used prior to S/N F30897)	2
10	178-858	SETSCREW - 5/16" x 3/8" (J84, used prior to S/N G40059)	2
11	C16119	PULLEY - drive shaft (J80, used prior to S/N F30897)	1
11	C16119	PULLEY - drive shaft (J84, used prior to S/N G40059)	1
12	C18183	CHAIN - auger drive 75 pitches #40 roller chain	1
13	C28982	LINK - connecting #40	1
13	C28984	LINK - roller #40	2
14	C28983	LINK - offset #40	2
14	NSS	BEARING ASSY - auger (J, K, L80-J, K, L84) (use C29265 - Hexagonal I.D.)	2
15	C29263	SLEEVE - Bearing	2
15	C29264	BEARING	2
16	195-545	WASHER - spacer 13/16" (J, K, L80 - J, K, L84)	1
16	C16108	AUGER - 38" (J80, K80 and L80)	1
16	C24378	AUGER - 48" (J84, K84 and L84)	1
17	138-2040	PIN - spiral 1/4" x 1-1/2"	1
18	NSS	COLLAR - locking (included with item 2)	1
19	C31908	SHAFT ASSEMBLY - drive (J, K, L, M, N, P, R, S84, used S/N G40059 and after)	2
19	C31907	SHAFT ASSEMBLY - drive (J, K, L, M, N, P, R, S80, used S/N F30897 and after)	1
20	C19731	PULLEY - drive shaft (J80, used S/N F30897 and after)	1
20	C19731	PULLEY - drive shaft (J84, used S/N G40059 and after)	1
21	C31963	PULLEY - drive shaft (K, L, M, N, P, R, S80 - K, L, M, N, P, R, S84)	1
21	C25205	AUGER - 38" (M, N, P, A, S80) includes C25840	1
21	C25853	AUGER - 48" (M, N, P, A, S84) includes C25840	1
22	C25840	SLEEVE - bearing (M, N, P, R, S80-M, N, P, R, S84)	2
23	C28971	BEARING - auger (M, N, P, R, S80-M, N, P, A, S84)	2
24	C25841	SHAFT - stub (M, N, P, A, S80 - M, N, P, R, S84)	2
25	195-522	WASHER - spacer 3/8" (M, N, P, R, S80 - M, N, P, R, S84)	UAR
26	121-226	BOLT - 3/8" x 1" NC hex (use lock sealant on threads) flange lock	2
27	193-68	LOCK WASHER - 3/8"	2
28	113-102	BOLT - 5/16" x 3/4"	2
29	C32391	BRACKET - bearing (S80, S84)	1
30	113-206	BOLT - 3/8" - 16 x 3/4"	2
31	131-938	NUT - flange lock 3/8" - 16	2

NOTE: If this snow caster has been converted to fit on 3000, 4000 series tractors, see model SB38G and SB48 snow caster for parts.